

INSTALLATION INSTRUCTIONS – 5G

1. GENERAL INFORMATION

Please read these instructions thoroughly in conjunction with relevant country standards before installation.

Transport, Storage, Acclimatization:

- Transport and store cartons in laying position;
- Store planks at room temperature for at least 48h in their packaging, prior installation;
- Remove plastic wrapping from packaging only when ready to install;
- Room temperature must be at least 18°C (65°F) before and during installation.

Subfloor Requirements:

- Floating floors can be laid on top of the most hard surfaces (e.g. concrete, ceramics, wood);
- Soft subfloors (e.g. carpets) must be removed;
- The subfloor must be even, flat, dry and variations should not exceed 3mm in 2m (0.12" in 6.6 feet);
- All type of hard subfloors must be dry (concrete screeds < 2.0%; anhydrite screeds < 0.5% - CM Instrument);

Moisture Protection:

- All type of floors require insulation against moisture;
- Use PE film with minimum thickness of 0.2mm (0.008);
- On ground/basement subfloors we recommend laying 2 layers crossways for better protection.

Radiant-Heated Subfloors:

- Subfloor surface temperature must not exceed 28°C (82°F);
- For detailed information, follow instruction of the subfloor heating systems manufacturer or contact your supplier.

Preventive Care:

- If works will take place in the room where the floor is installed, protect with craft paper, plywood or hardboard;
- Do not drag furniture across the floor;
- Use felt pads on chair and furniture legs
- Office roller chairs must comply with DIN 68131;
- Place quality walk-off mats at all entrances to retain tracked in dirt, grit and moisture;
- Never use latex or rubber backed mats as they can permanently stain the floor;
- Avoid moisture on the floor;
- Ideal and healthy room conditions are 35-65% R.H. at 20°C (68°F);
- If necessary use a room humidifier;
- Floors are intended for indoor use only;
- Flooring products are based on natural materials, and will expand and contract through heating and non-heating seasons, thus experiencing some separation between the planks/tiles at different times during the year. Such separations are not considered a product defect.

1/2

2. LAYING INSTRUCTIONS

Inspection:

- o Prior to installation, inspect planks in daylight for visible faults/damage;
- o Check if subfloor/site conditions comply with the specifications described in these instruction;
- o If you are not satisfied do not install, and contact your supplier.

Tools and materials required:

- o Electric saw;
- o Spacers;
- o Pencil;
- o Set square;
- o PE film;
- o Adhesive tape.

Moisture Protection:

- o Lay the PE film, allowing for at least 20 cm (8") overlapping and tape;
- o Turn the film upward 5 cm along the walls;
- o Trim after the skirting boards are fixed.

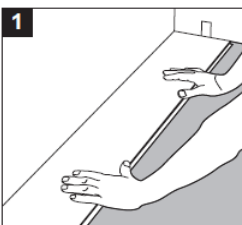
Before laying:

- o Measure the room at right angle to the direction of the planks;
- o Planks in the final row should be at least 5 cm wide;
- o For this purpose, planks in the first row can be cut to smaller size;
- o Shuffle planks in order to obtain a pleasant blend of shades;
- o Lay planks preferably following the direction of the main source of light;
- o We recommend laying on wooden floors crossways to the existing floorboard;
- o Planks must not be nailed or screwed to the subfloor;
- o Skirting boards must not be fixed in a way which restricts the movement of the floor.

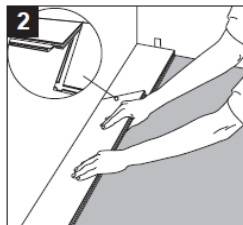
2/2

Expansion gaps:

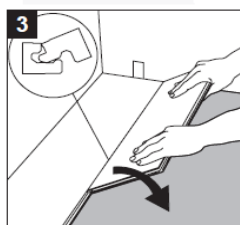
- o Provide 10 mm expansion gaps to the walls and other fixed objects;
- o Areas greater than 100 m² (900 sq. ft) or 10 m (30 feet) in either direction, transitions between rooms and asymmetrical areas require extra expansion gaps.



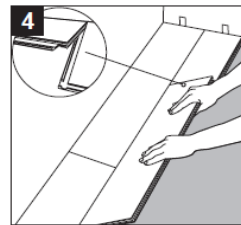
Start in the corner _ turn the tongue side of the plank to the wall _ maintain a gap of 10 mm on the short side.



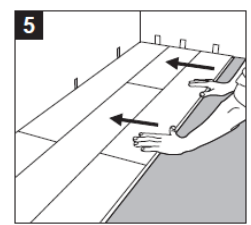
Hold the next plank against the first matching the corners and fold it down till a confirming sound of a "click" | Complete first row in the same way | Cut final plank of the first row to correct length | Start next row with the piece leftover (must be at least 300mm long) | Ensure that end joints are staggered at least 300mm | If you are installing tiles with 605x445mm, brick or half brick installation method can be used.



Place first plank of the new row with the tongue side at an angle against the groove side of the plank in the previous row _ press forward and lay it flat at the same time.



Place the second plank like the previous one ensuring that no joint is noticed between short sides and confirm the "click" sound | Ensure that the plank is positioned on the integral locking strip of the plank in the previous row.



Adjust the distance to the wall to 10mm when three rows are completed
Proceed installation as described above until reaching the opposite wall.