

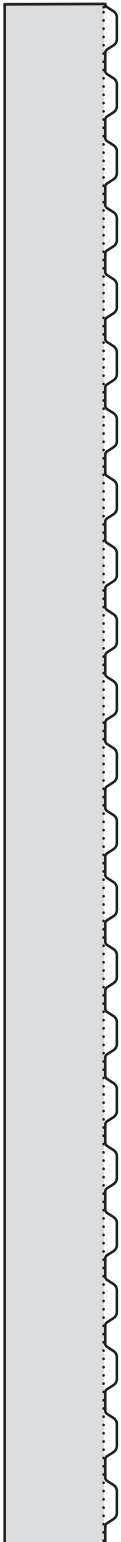
DATA SHEET

texture groove GM01



RIEDER

Accentuated lines in three different finishes ferro soft, ferro light and ferro create a lively relief and set exciting highlights on every facade.



13 mm + 2 mm



silvergrey | ferro light

PRODUCT	concrete skin
WIDTH	max. 1500 mm
LENGTH	max. 5000 mm
THICKNESS	13 + 2 mm
COLOURS	greyscale, timber, bricky, pietra <i>(custom colours on request)</i>
SURFACE	ferro soft, ferro light, ferro
WEIGHT	30 - 35 kg/m ²
FIXING	undercut anchor recommended
PRICE	€€€

Possible texture irregularity due to joint cuts.



The natural imperfection and visual irregularity of the vintage panels give the facade a unique appearance and above all individuality, since no slab is like any other.



anthracite | matt

PRODUCT	concrete skin, öko skin
WIDTH	max. 1310 mm
LENGTH	max. 5000 mm
THICKNESS	13 mm
COLOURS	anthracite, liquid black, terra, walnut, ebony, oxide red, burgundy, merlot (<i>custom colours on request</i>)
SURFACE	matt
WEIGHT	~ 30 kg/m ²
FIXING	rivets, adhesive, undercut anchor, screws, öko skin hidden fix (only for öko skin)
PRICE	€€€

13 mm

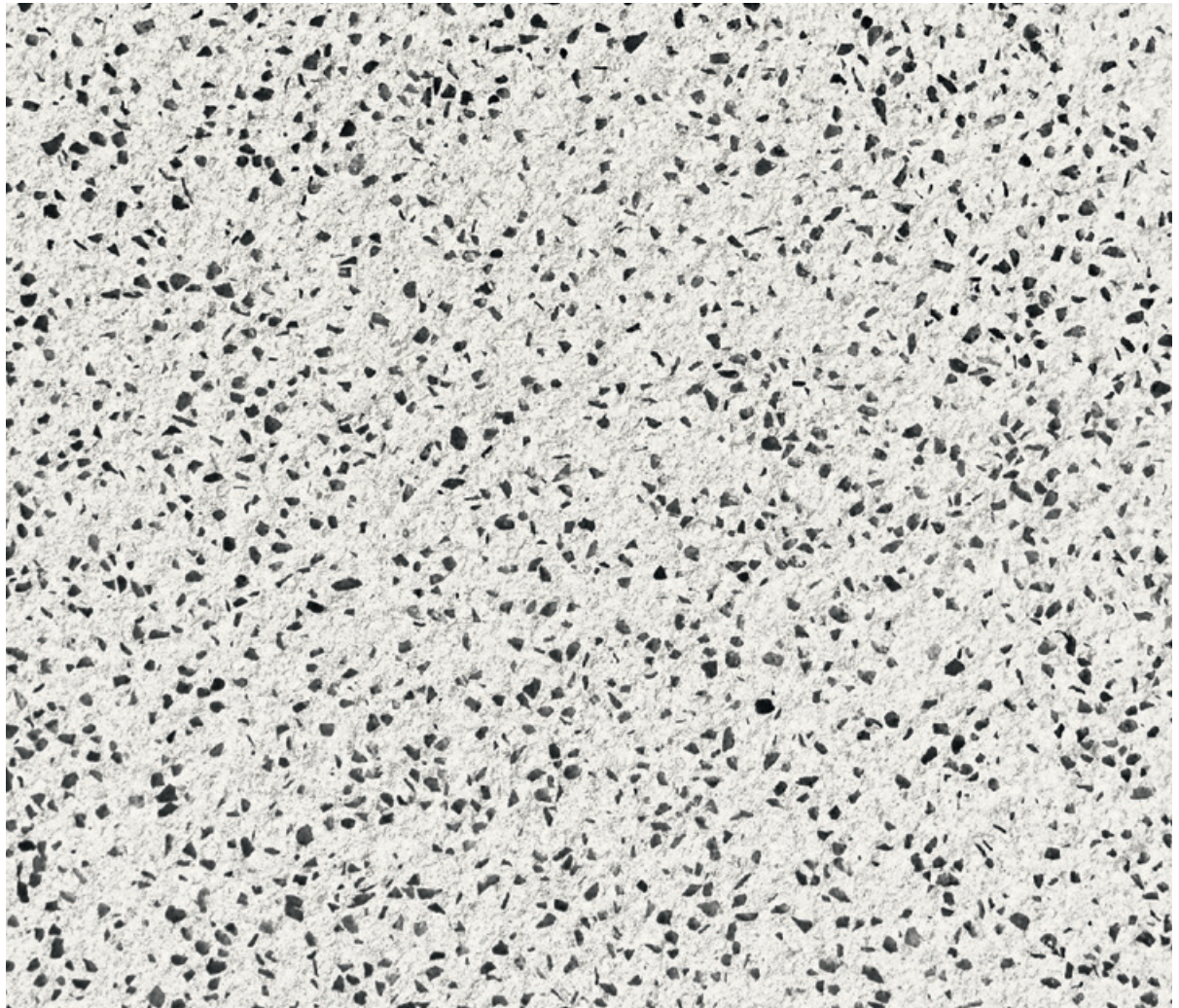
DATA SHEET

texture terrazzo black AG03



RIEDER

The coarse, dark grain gives this slab a individual look. A special surface treatment lends the texture a unique speckled appearance, which forms an exciting contrast especially with light colours. terrazzo black gives the facade a discreet two-tone effect.



polar white | ferro plus for terrazzo

PRODUCT	concrete skin
WIDTH	max. 1310 mm
LENGTH	max. 5000 mm
THICKNESS	13 mm
COLOURS	greyscale, timber, bricky, pietra <i>(custom colours on request)</i>
SURFACE	ferro plus for terrazzo
WEIGHT	~ 30 kg/m ²
FIXING	rivets, adhesive, undercut anchor
PRICE	€€€

13 mm

DATA SHEET

texture salt'n'pepper AG05



RIEDER

A small, dark grain that adds zest to the facade. The contrast of the two-tone slabs varies according to the colour of the concrete.



polar white | ferro

PRODUCT	concrete skin
WIDTH	max. 1500 mm
LENGTH	max. 5000 mm
THICKNESS	13 mm
COLOURS	greyscale (excl. liquid black), timber, bricky, pietra <i>(custom colours on request)</i>
SURFACE	ferro, ferro plus
WEIGHT	~ 30 kg/m ²
FIXING	rivets, adhesive, undercut anchor
PRICE	€€€

13 mm

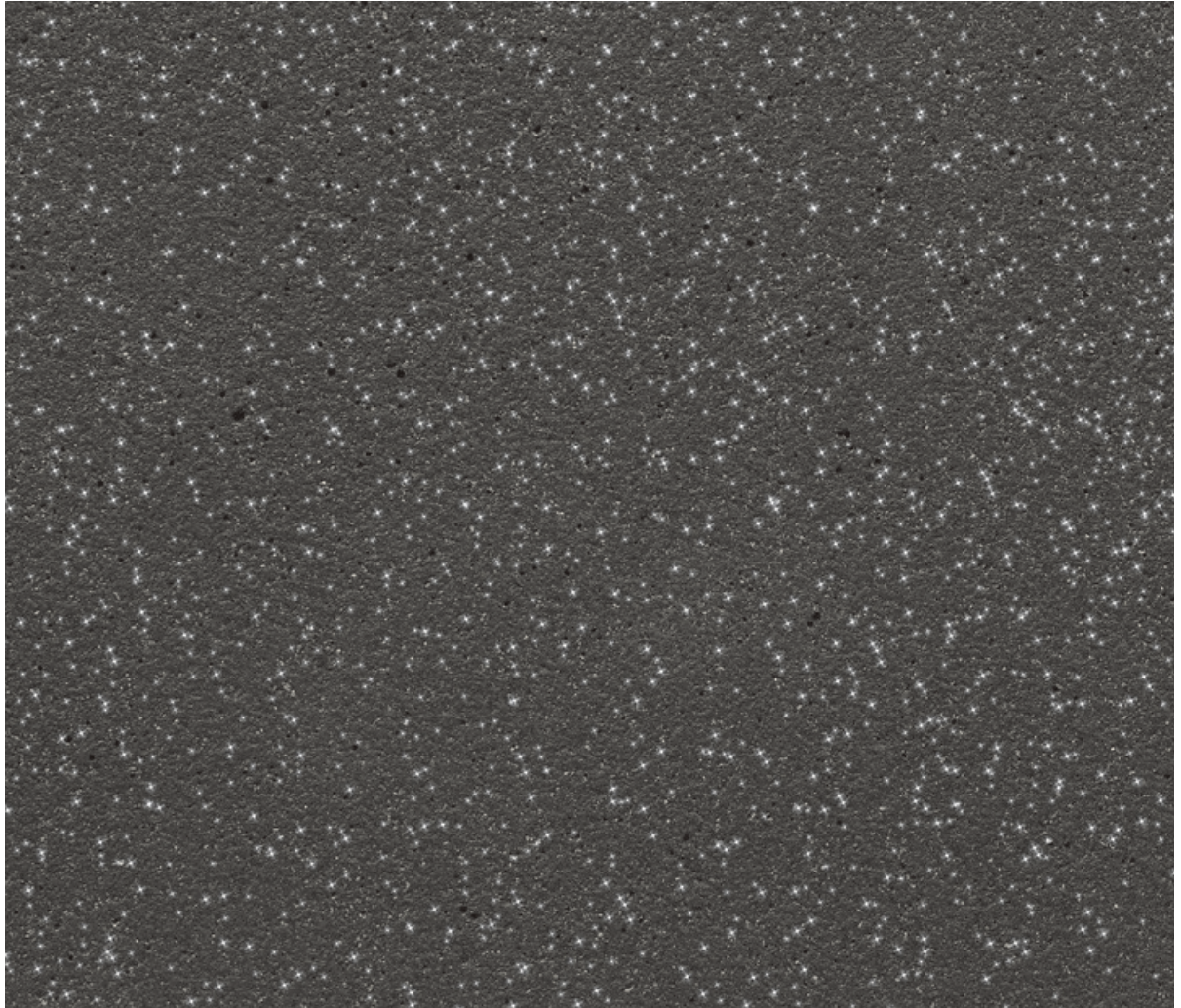
DATA SHEET

texture luce silver AG01



RIEDER

The addition of mica gives the facade a glittering, shimmering appearance. Depending on how the sunlight falls, the particles reflect in different ways and create unique effects. This is definitely the texture for individual highlights.



liquid black | ferro

PRODUCT	concrete skin
WIDTH	max. 1500 mm
LENGTH	max. 5000 mm
THICKNESS	13 mm
COLOURS	greyscale, timber, bricky, pietra <i>(custom colours on request)</i>
SURFACE	ferro
WEIGHT	~ 30 kg/m ²
FIXING	rivets, adhesive, undercut anchor
PRICE	€€€

13 mm

The exquisite texture is an interior highlight and an elegant eye-catcher. The shiny surface reflects the light and creates a new space effect. The slabs have a different look depending on how the light falls. This texture particularly emphasises the vivid surface characteristic of concrete with its interplay of colour shades and cloud effects. The natural appearance of the material changes over time, giving each panel a unique look.



anthracite | solo

PRODUCT	concrete skin
WIDTH	max. 1500 mm
LENGTH	max. 5000 mm
THICKNESS	13 mm
COLOURS	greyscale, timber, bricky, pietra <i>(custom colours on request)</i>
SURFACE	solo
WEIGHT	~ 30 kg/m ²
FIXING	rivets, adhesive, undercut anchor
PRICE	€€€

13 mm

DATA SHEET

texture twine GM04



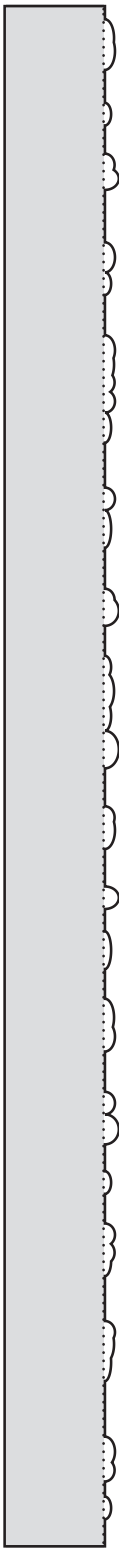
RIEDER

Irregular lines playfully run across the slabs like ribbons. The combination of straight and angled, partially overlapping lines of different sizes creates an exciting visual effect on the facade. The flow of the lines harmoniously integrates into the overall picture.



ivory | ferro light

PRODUCT	concrete skin
WIDTH	max. 1500 mm
LENGTH	max. 5000 mm
THICKNESS	13 + 2 mm
COLOURS	greyscale, timber, bricky, pietra <i>(custom colours on request)</i>
SURFACE	ferro soft, ferro light, ferro
WEIGHT	30 - 35 kg/m ²
FIXING	undercut anchor recommended
PRICE	€€€



13 mm + 2 mm

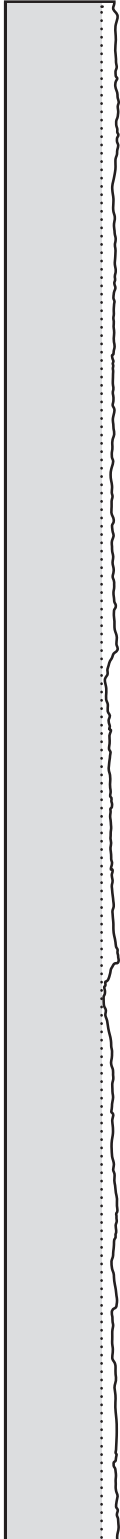
DATA SHEET

texture slate *SI02*



RIEDER

The appearance of the texture is based on slate slabs and their natural layers. A unique light refraction occurs at the edges of the rock layers, causing them to stand out to varying degrees depending on the angle the light hits. Since light conditions change over the course of the day, the facade with this texture has a different appearance depending on the time of day. This gives the building a vibrant and natural look. Like an image of nature, the facade blends harmoniously into its surroundings.



13 mm + 2 mm



liquid black | ferro soft

PRODUCT	concrete skin
WIDTH	max. 1500 mm
LENGTH	max. 5000 mm
THICKNESS	13 + 2 mm
COLOURS	greyscale, timber, bricky, pietra <i>(custom colours on request)</i>
SURFACE	ferro soft
WEIGHT	30 - 35 kg/m ²
FIXING	undercut anchor recommended
PRICE	€€€

DATA SHEET

texture lumber S103



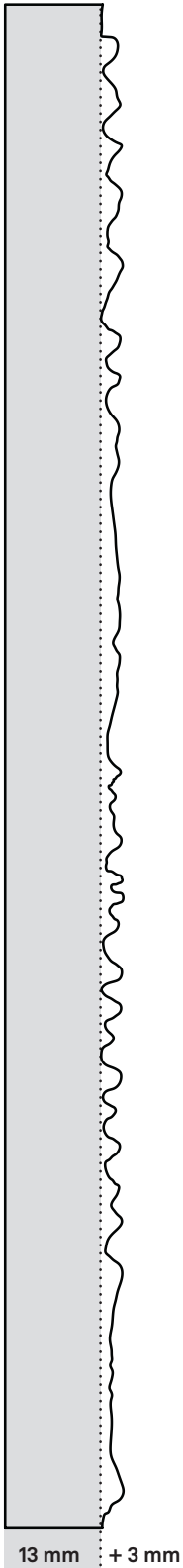
RIEDER

lumber is based on an authentic natural look. A homogeneous wood grain lends the building envelope a strong depth effect. Similar to wood, the facade panels have a multi-layered effect, but unlike wood, they do not require additional weather protection.



ivory | ferro

PRODUCT	concrete skin
WIDTH	max. 1500 mm
LENGTH	max. 5000 mm
THICKNESS	13 + 3 mm
COLOURS	greyscale, timber, bricky, pietra <i>(custom colours on request)</i>
SURFACE	ferro
WEIGHT	~ 35 kg/m ²
FIXING	undercut anchor recommended
PRICE	€€€



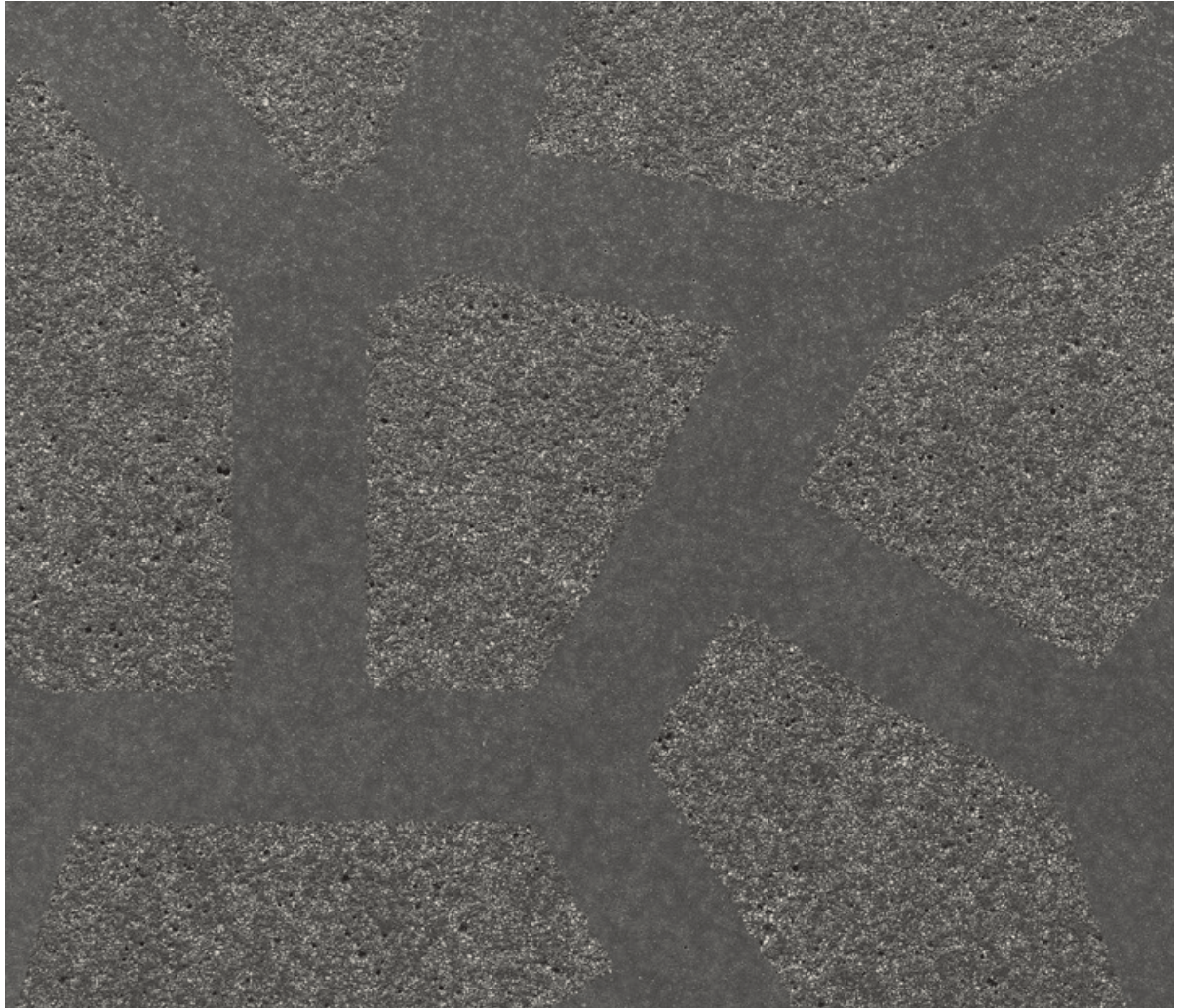
DATA SHEET

texture pattern PA01



RIEDER

There is no limit to the imagination when it comes to designing the texture pattern. Individually selected patterns are blasted into the glassfibre reinforced concrete elements. These give the facade an extraordinary look and feel as well as a unique appearance.



anthracite | matt and ferro

PRODUCT	concrete skin
WIDTH	max. 1310 mm
LENGTH	max. 5000 mm
THICKNESS	13 mm
COLOURS	greyscale, timber, bricky, pietra <i>(custom colours on request)</i>
SURFACE	matt and ferro
WEIGHT	~ 30 kg/m ²
FIXING	rivets, adhesive, undercut anchor
PRICE	€€€

13 mm