

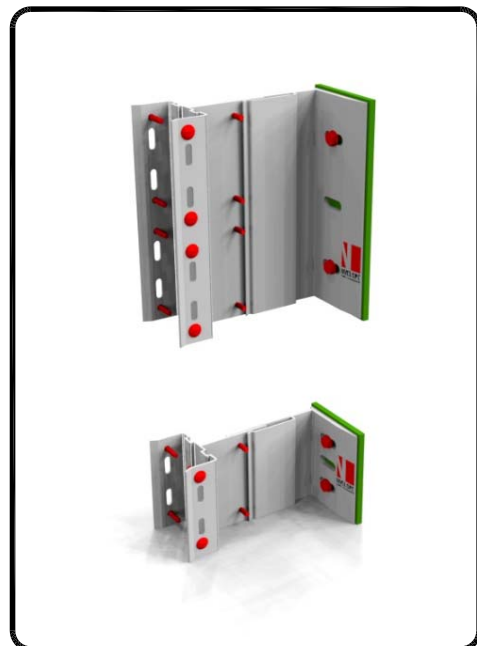
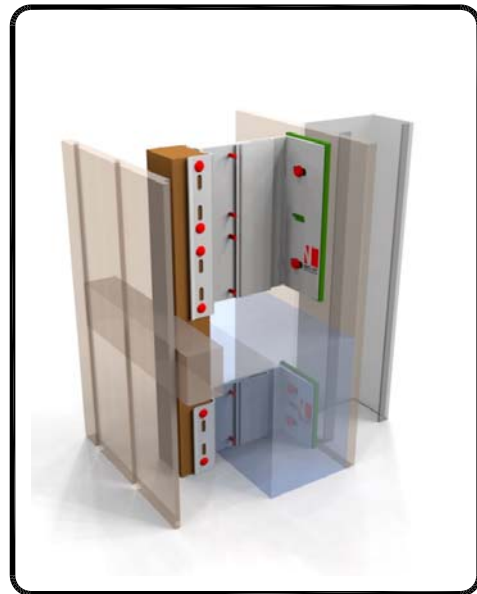
Ventilated
Aluminium support system for
TIMBER / BOARD CLADDING

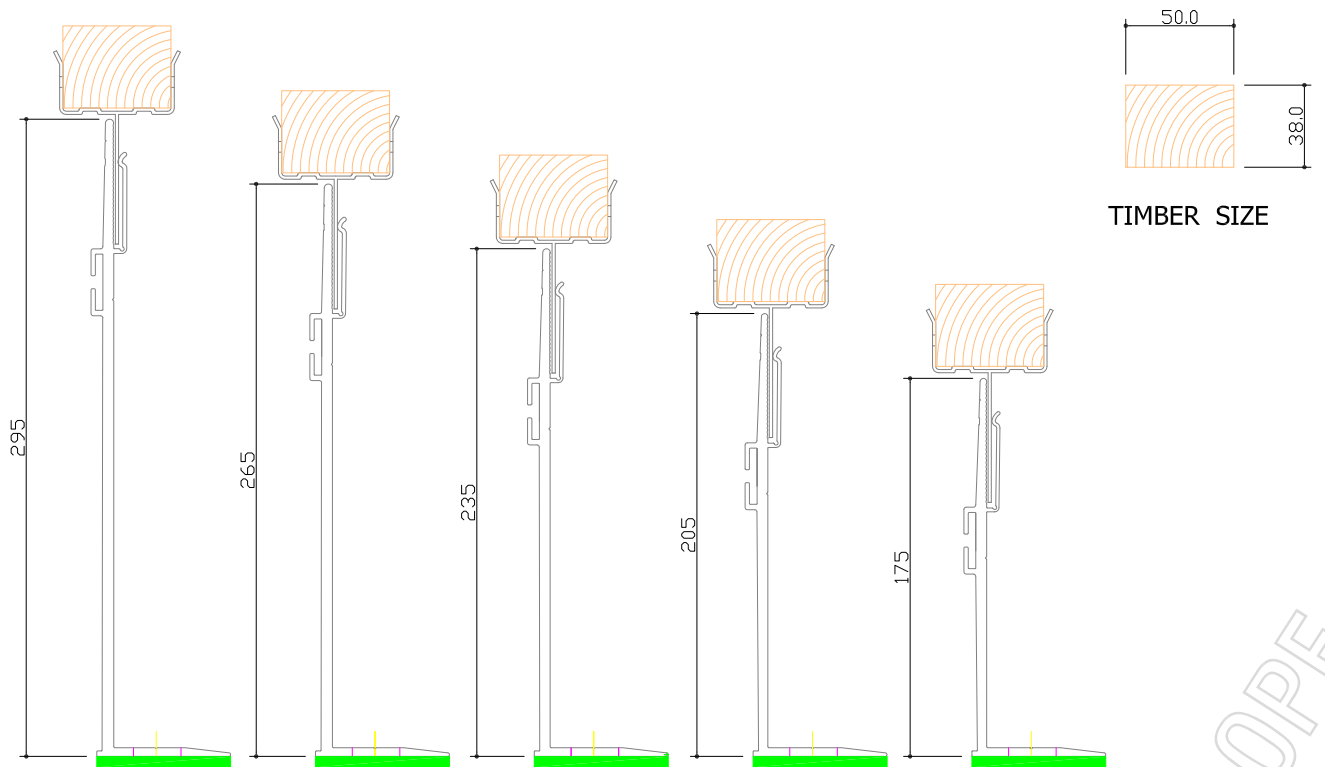
LEGEND:

- A – cladding
- B – joint profile
- C – clamp
- D – corner-profile
- F – window profile
- 1 – Wall
- 2 – NVELOPE – support bracket
- 3 – Stainless steel fixing
- 4 – Self drilling stainless steel screw SR2 4.2 x 16
- 5 – Vertical Timber Batten
- 6 – Thermal insulation
- 7 – Ventilation
- 8 – Uni-carrier
- 9 – NVELOPE Thermal isolator
- 10 – Timber fixing screw

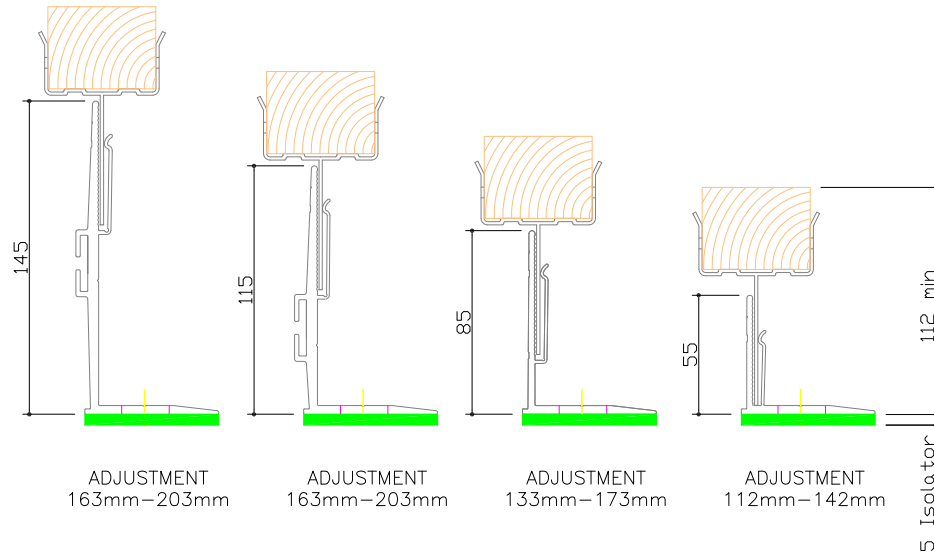
CONTENTS:

- NV6 – 01 Tolerances for adjustment
- NV6 – 02 View of cladding drawing locations – Timber cladding
- NV6 – 03 View of cladding – Timber cladding
- NV6 – 04 Horizontal section – NVELOPE 90 with T100 carrier
- NV6 – 05 Vertical section – Base of cladding
- NV6 – 06 Vertical section – Head of cladding
- NV6 – 07 Horizontal section – Window return detail
- NV6 – 08 Vertical section – Window sill detail.
- NV6 – 09 Vertical section – Window Head detail
- NV6 – 10 Horizontal section – External Corner
- NV6 – 10A Horizontal section – Internal Corner
- NV6 – 10B Horizontal section – External Corner





ADJUSTMENT 343mm-383mm ADJUSTMENT 313mm-353mm ADJUSTMENT 283mm-323mm ADJUSTMENT 253mm-293mm ADJUSTMENT 223mm-263mm

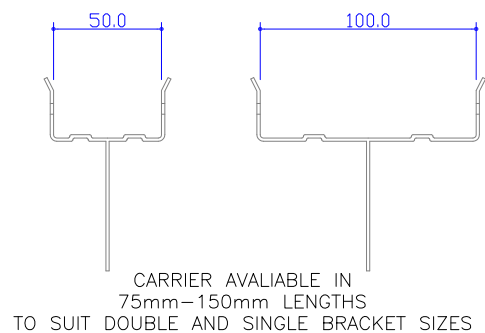


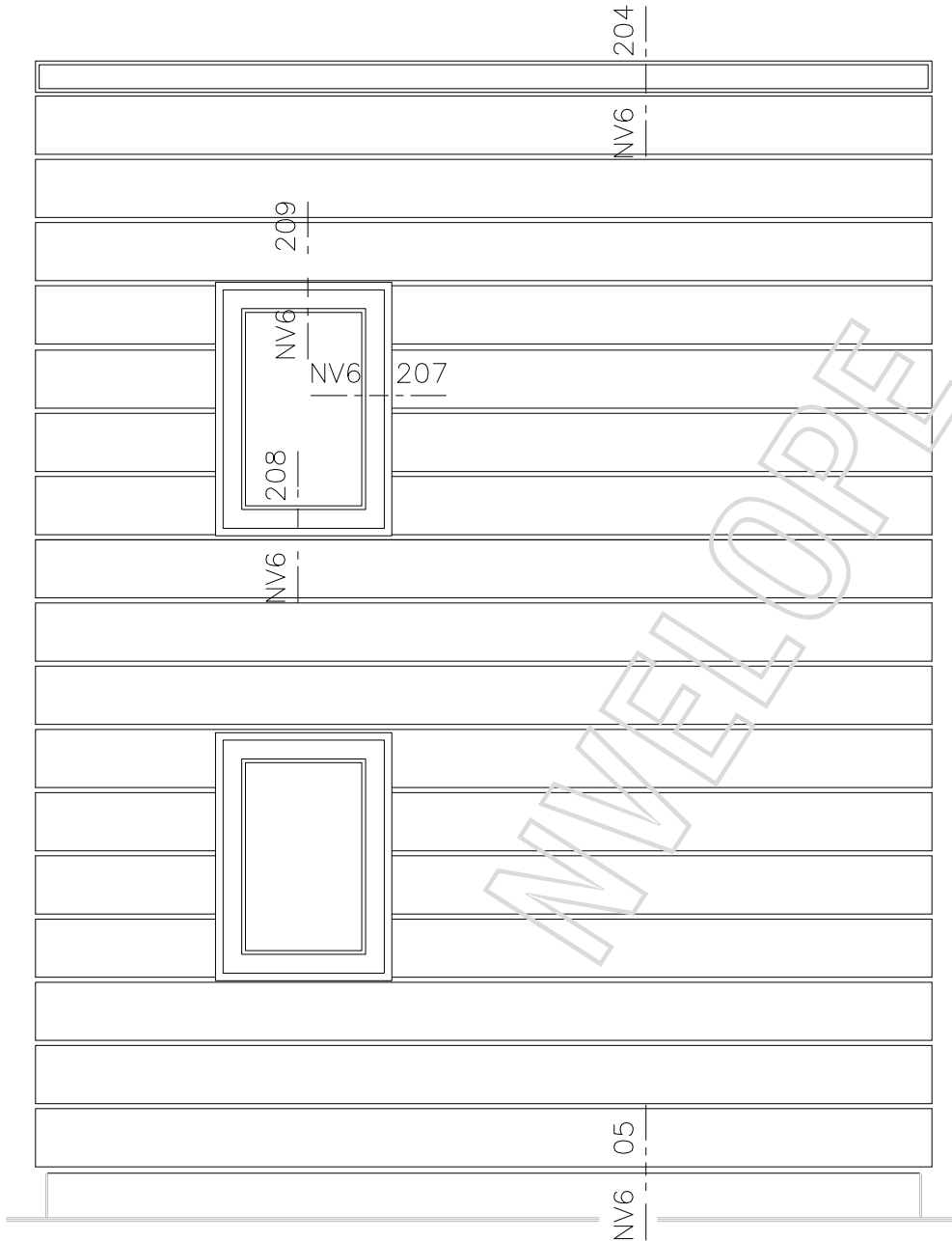
ADJUSTMENT 163mm-203mm ADJUSTMENT 163mm-203mm ADJUSTMENT 133mm-173mm ADJUSTMENT 112mm-142mm

5. Isolator

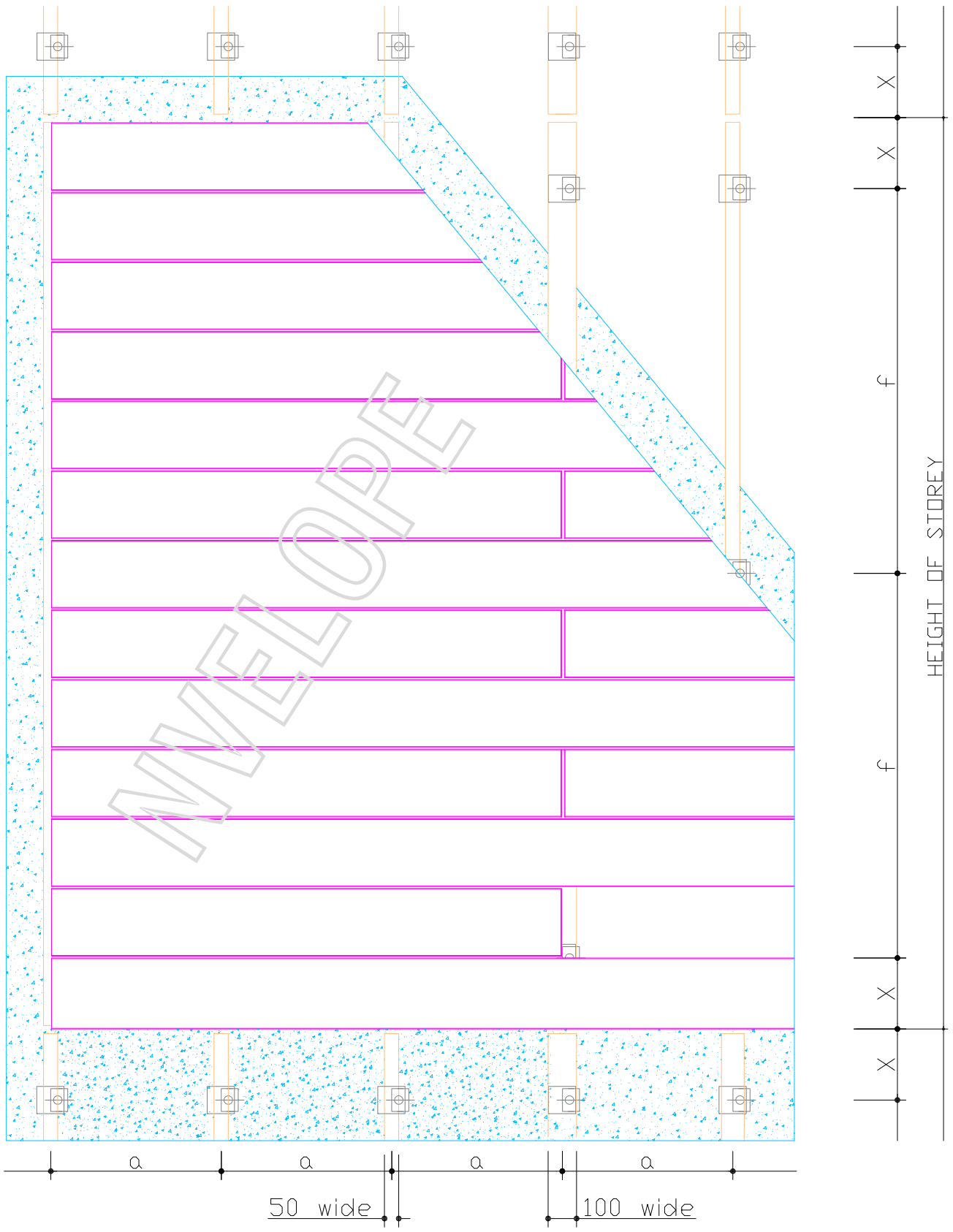
**HORIZONTAL SECTIONS
TOLERANCES FOR ADJUSTMENT**

BRACKETS	Adjustment range for each bracket (mm)	Based on a 50 x 38 timber
Nvelope 60	from 112	to 142
Nvelope 90	from 133	to 173
Nvelope 120	from 163	to 203
Nvelope 150	from 193	to 233
Nvelope 180	from 223	to 263
Nvelope 210	from 253	to 293
Nvelope 240	from 283	to 323
Nvelope 270	from 313	to 353
Nvelope 300	from 343	to 383

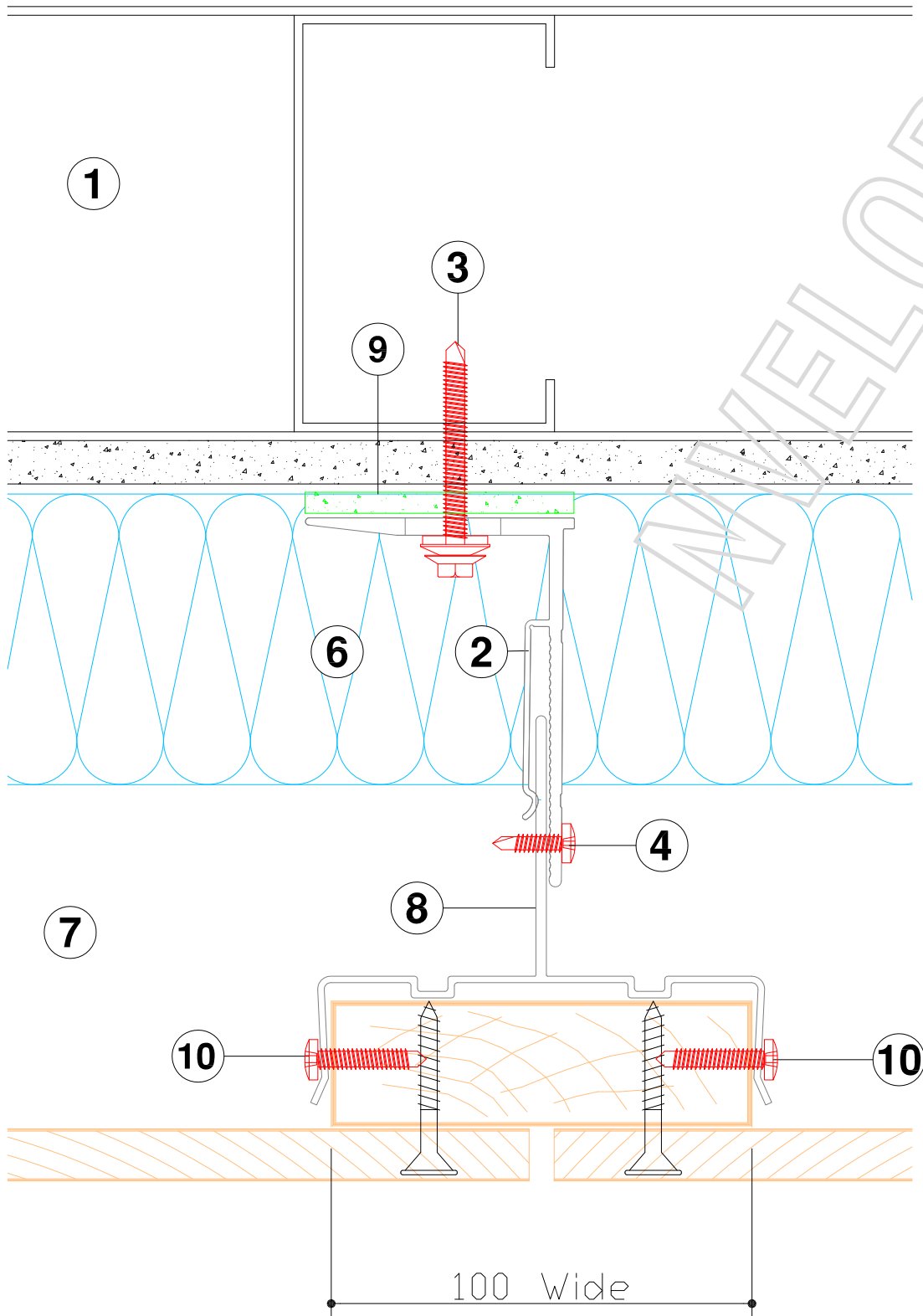




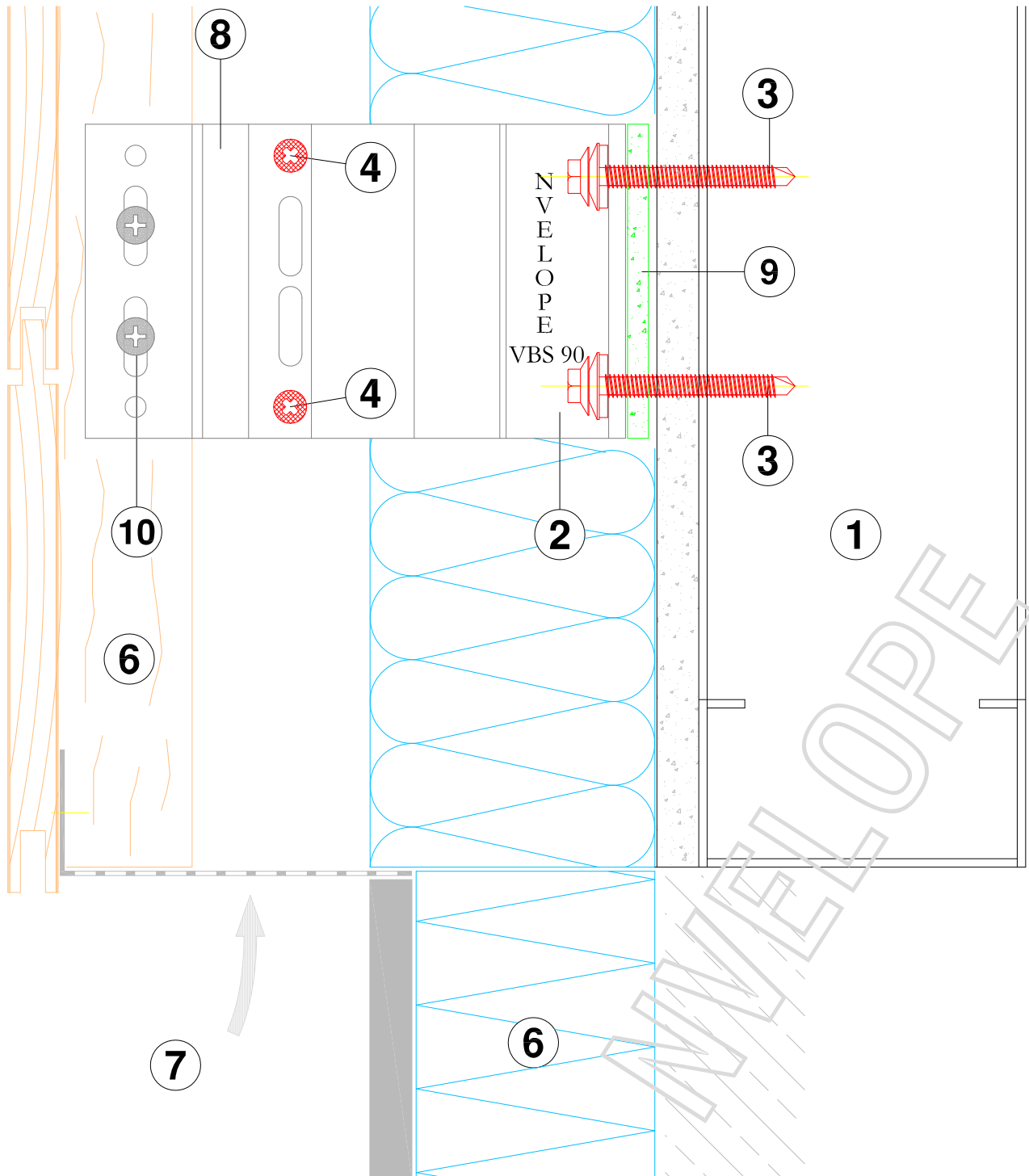
VIEW OF CLADDING



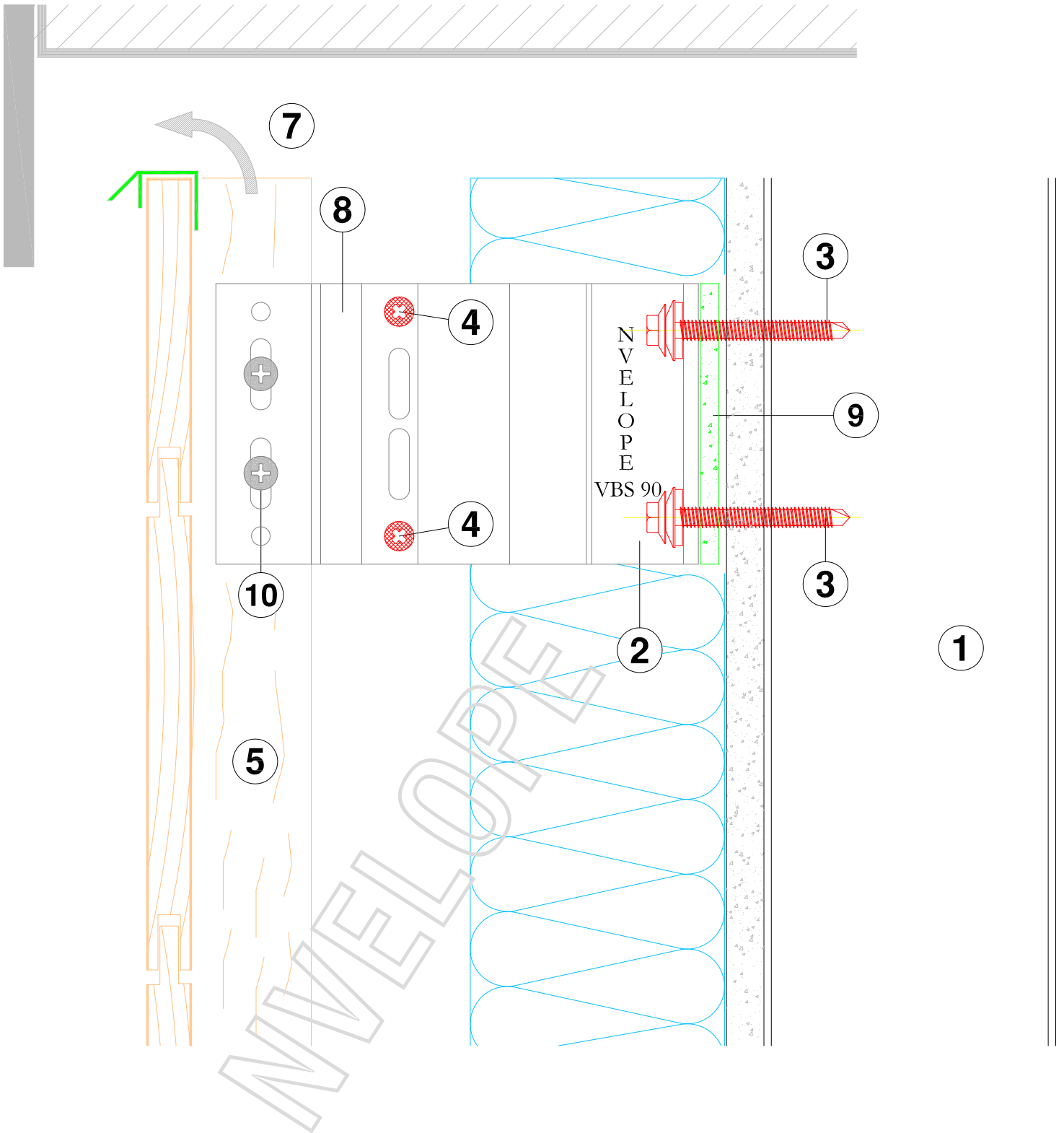
VIEW OF CLADDING



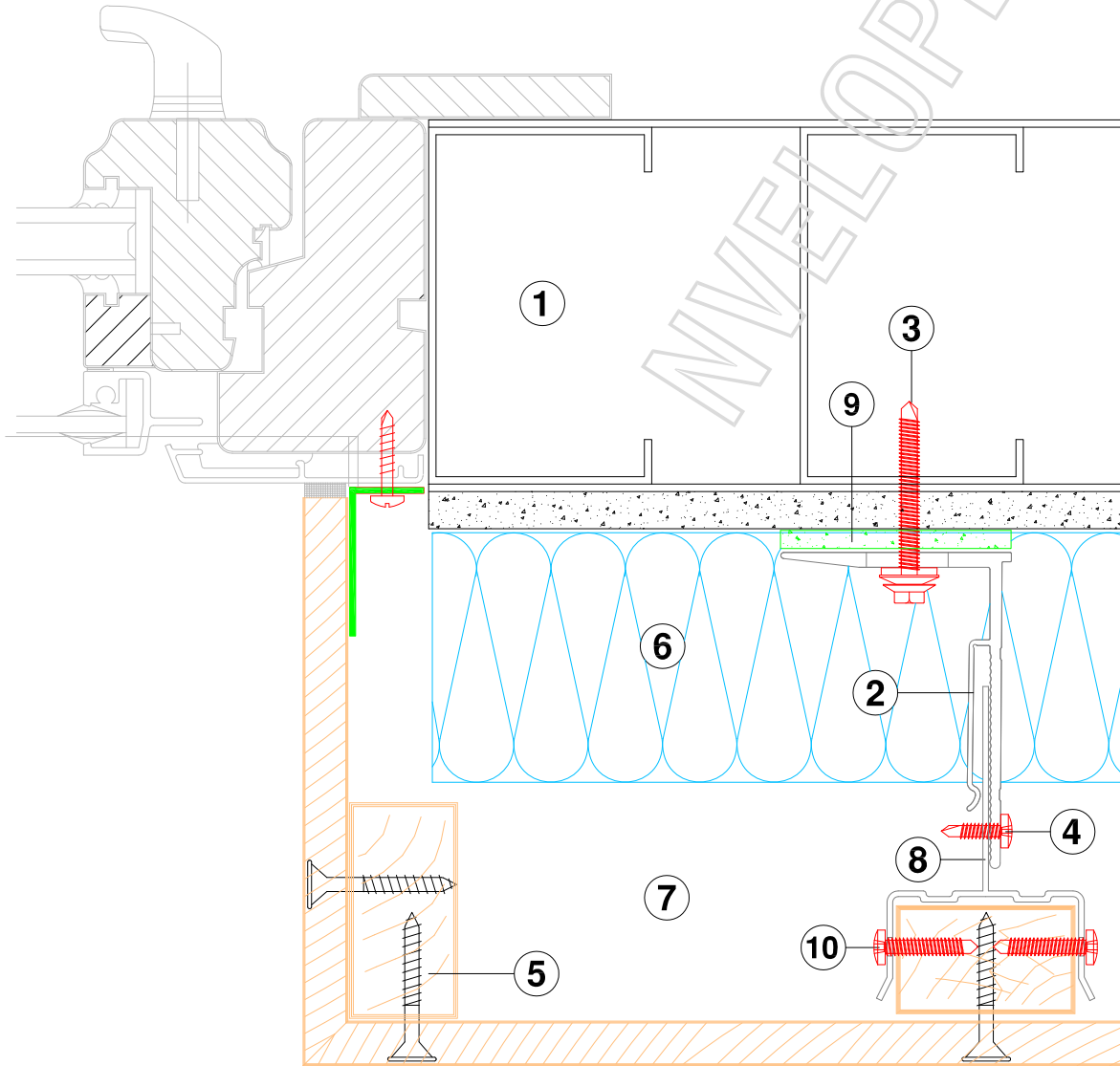
HORIZONTAL JOINT SECTION - NVELOPE 90 WITH T10 CARRIER



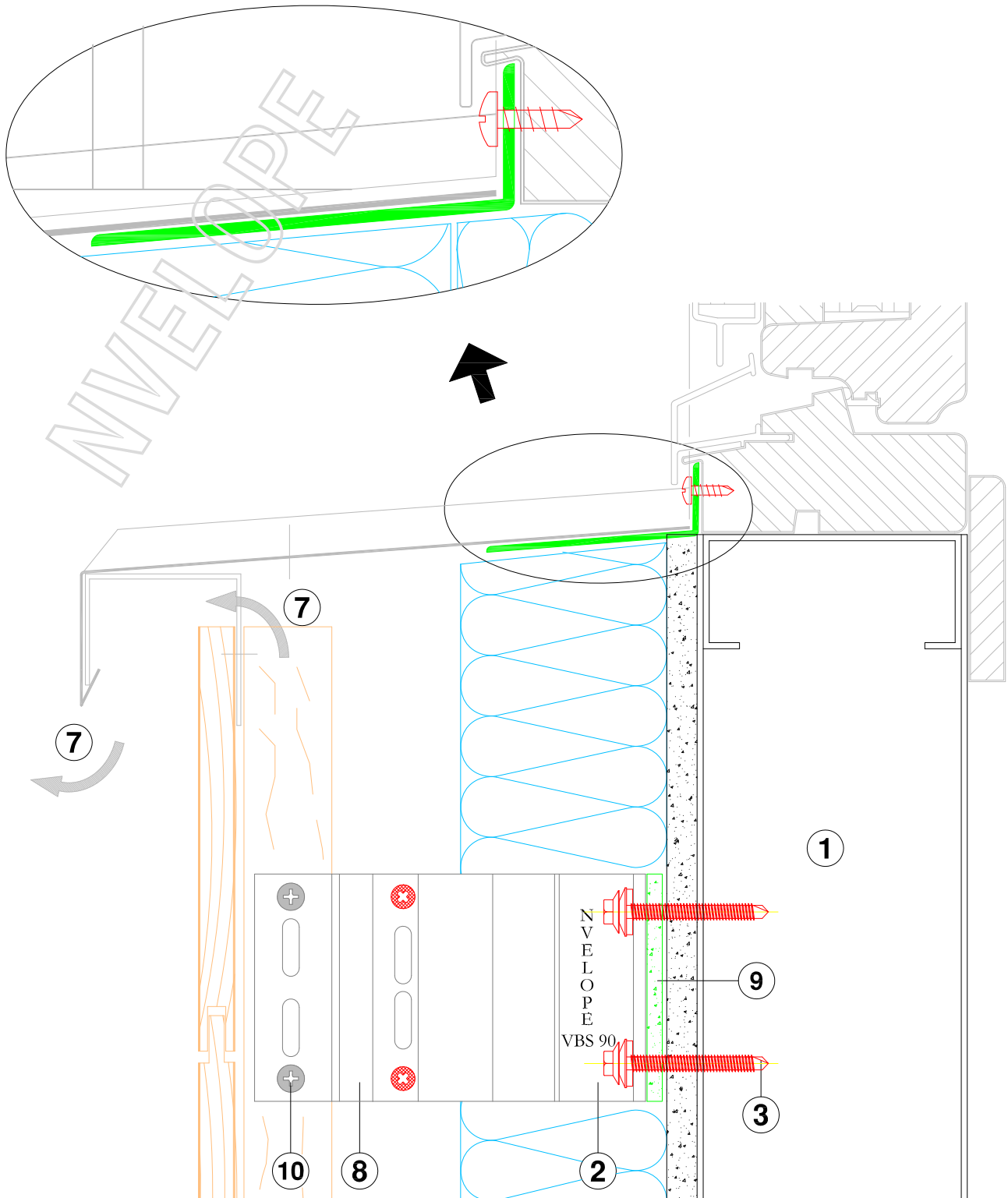
VERTICAL SECTION - BASE DETAIL



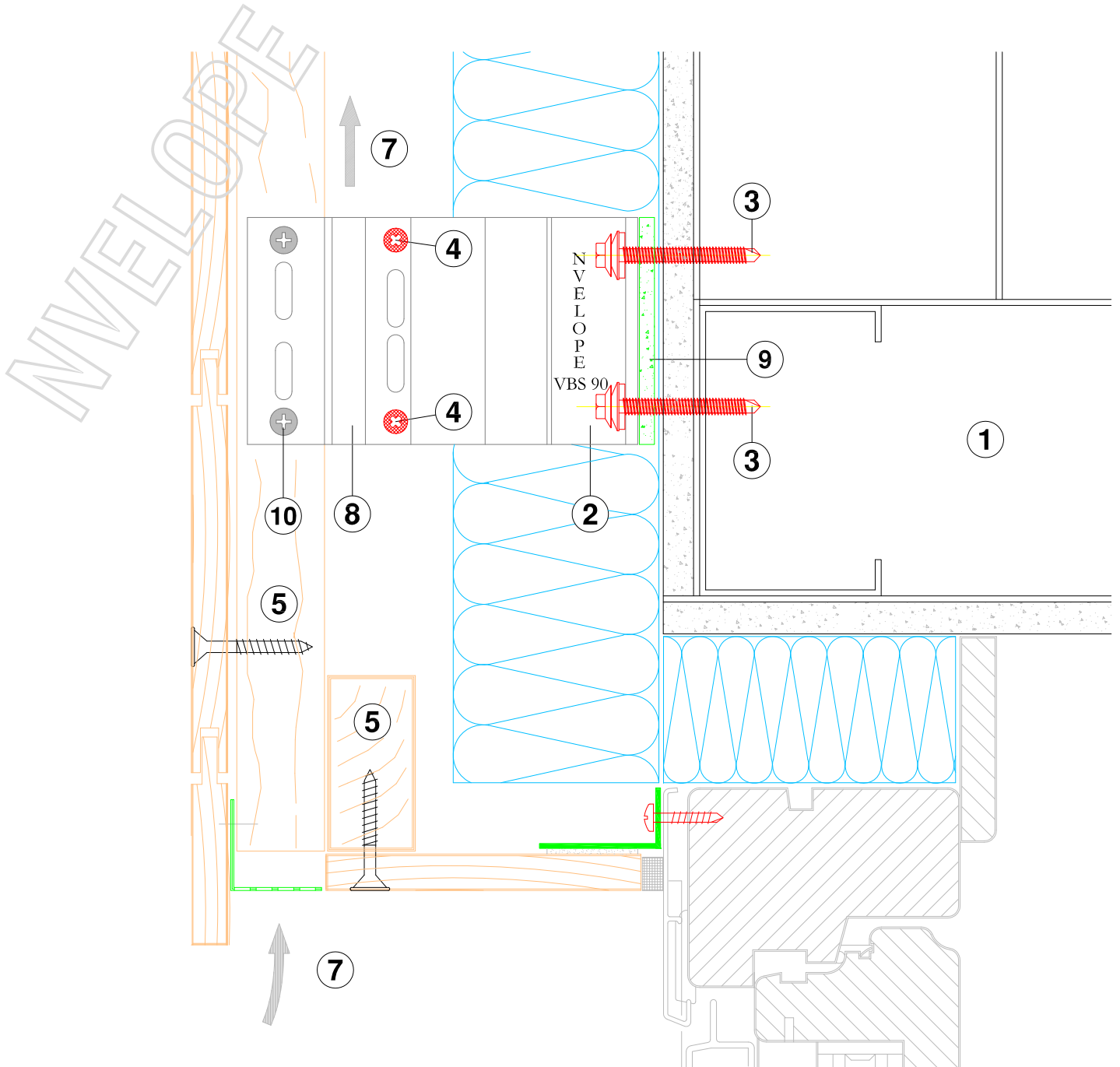
VERTICAL SECTION - HEAD DETAIL



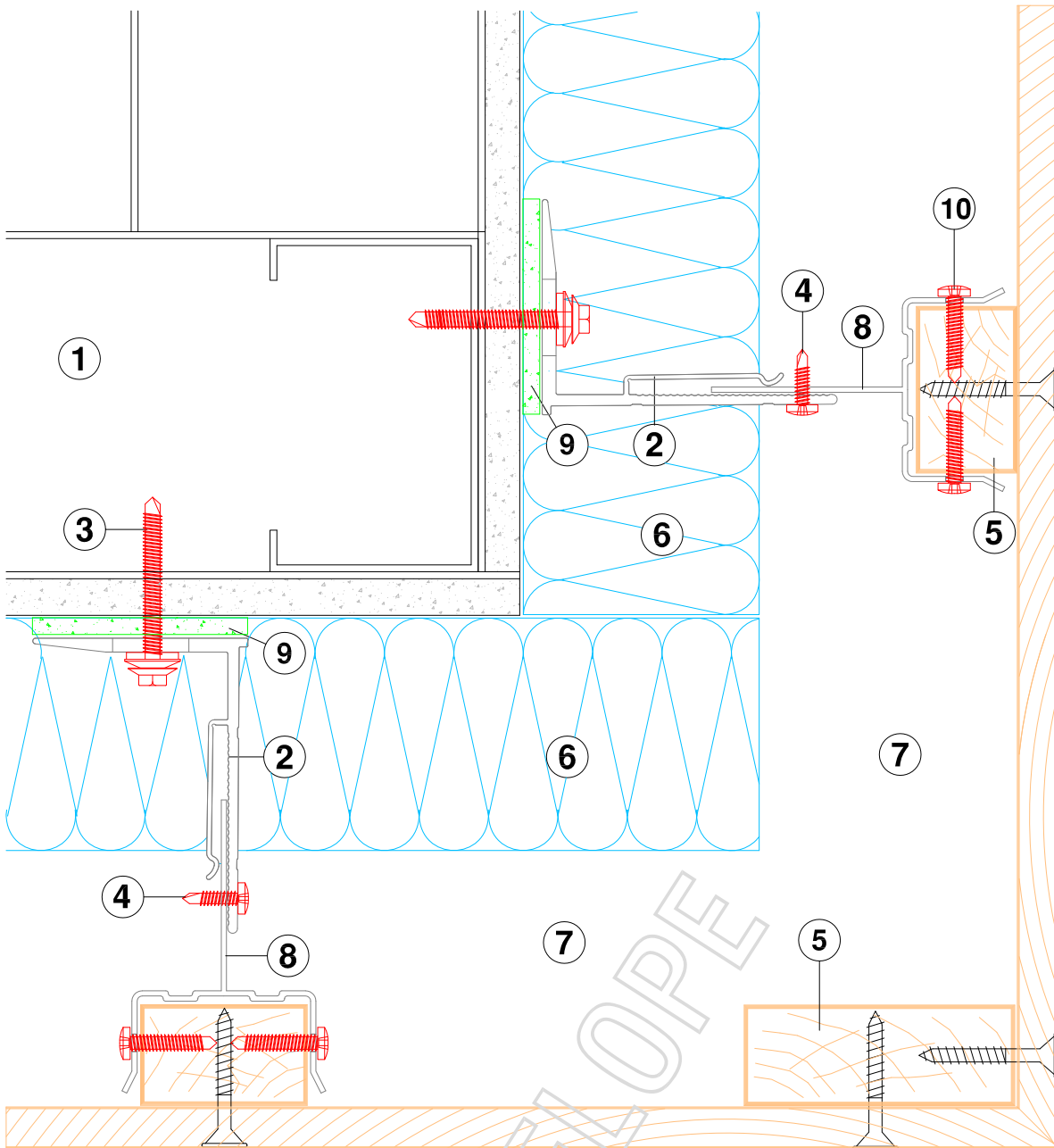
HORIZONTAL SECTION - WINDOW DETAIL



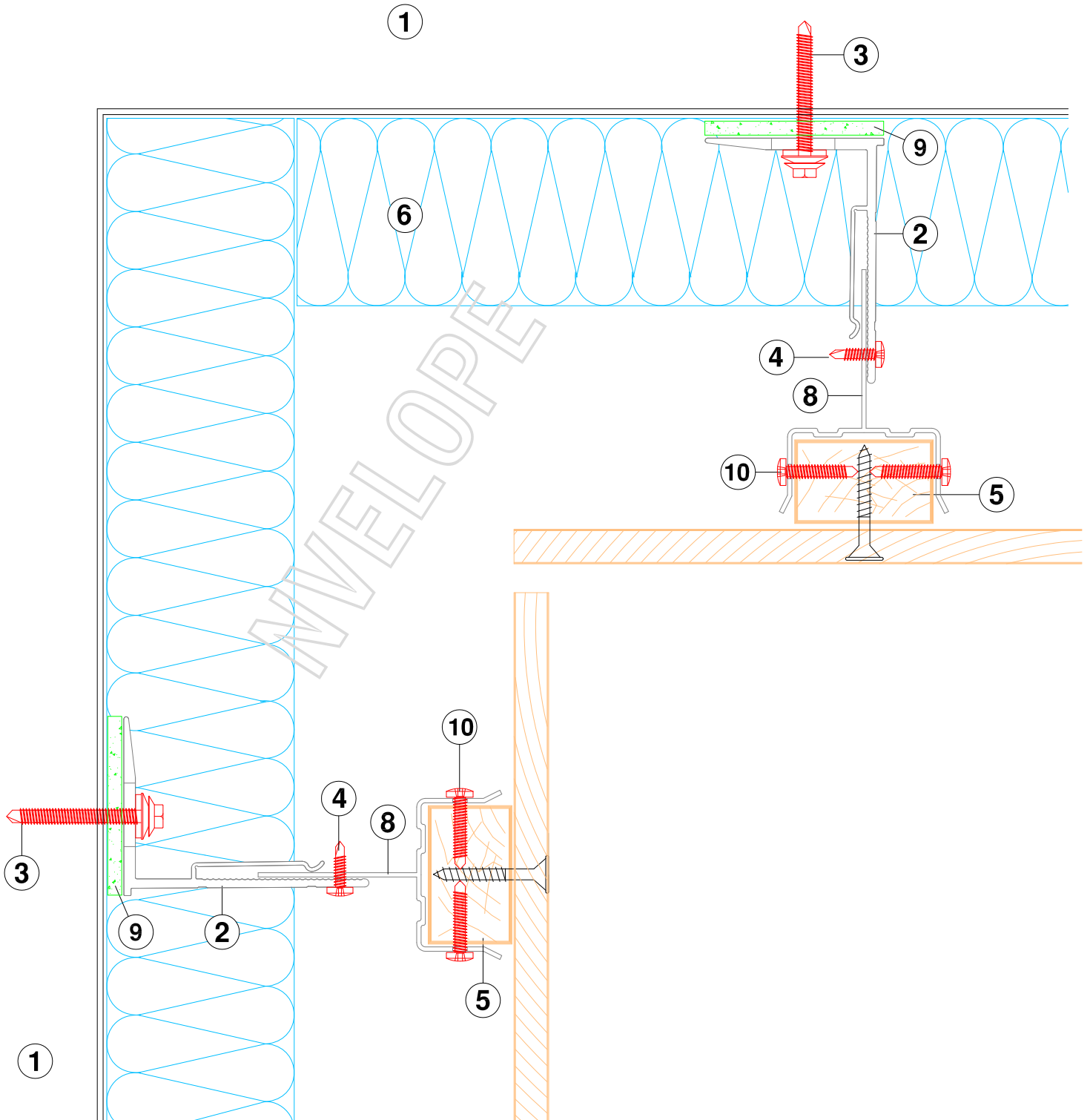
VERTICAL SECTION - WINDOW SILL DETAIL



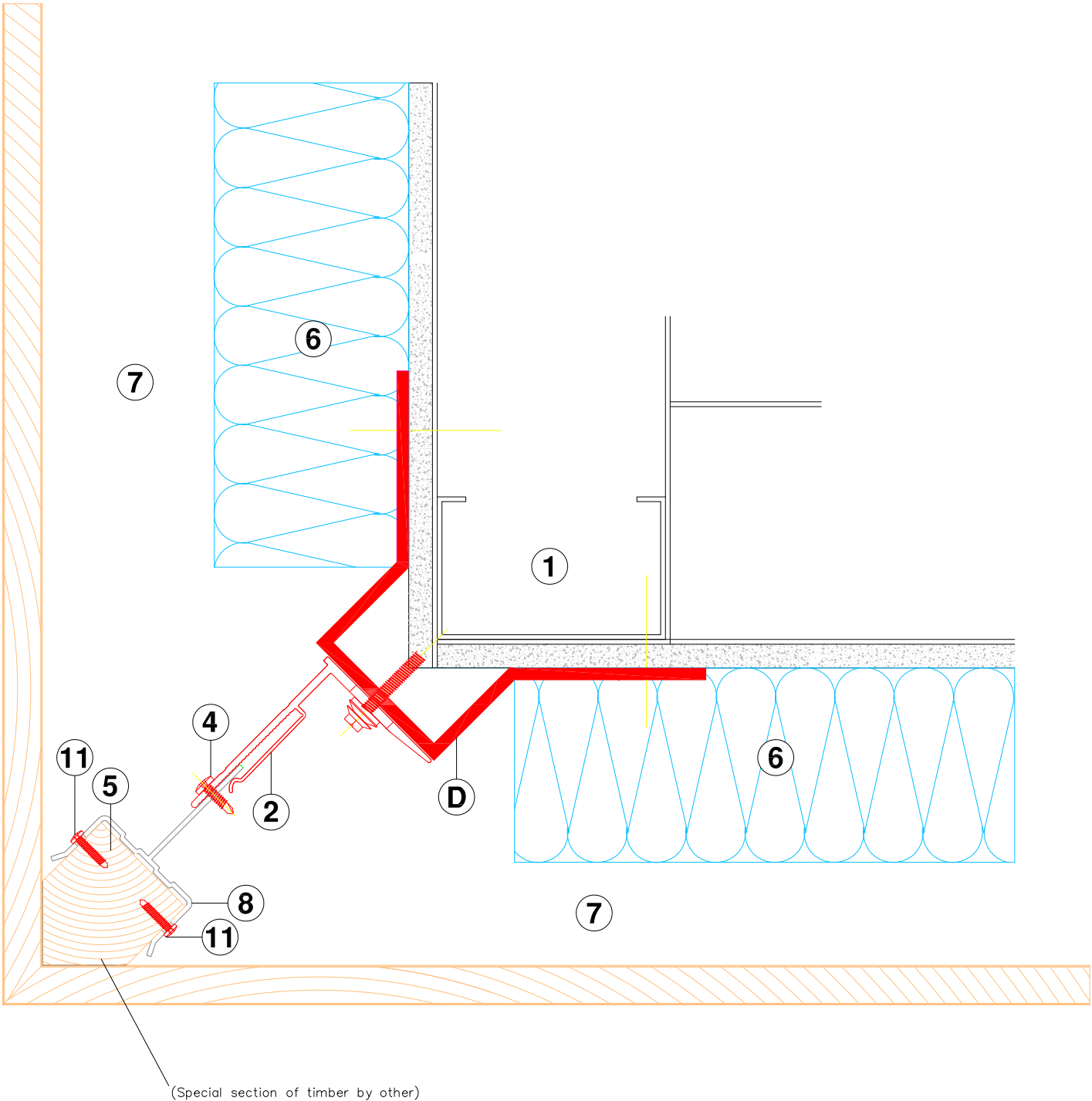
VERTICAL SECTION - WINDOW HEAD DETAIL



HORIZONTAL SECTION - EXTERNAL CORNER



HORIZONTAL SECTION - INTERNAL CORNER



HORIZONTAL SECTION - EXTERNAL CORNER