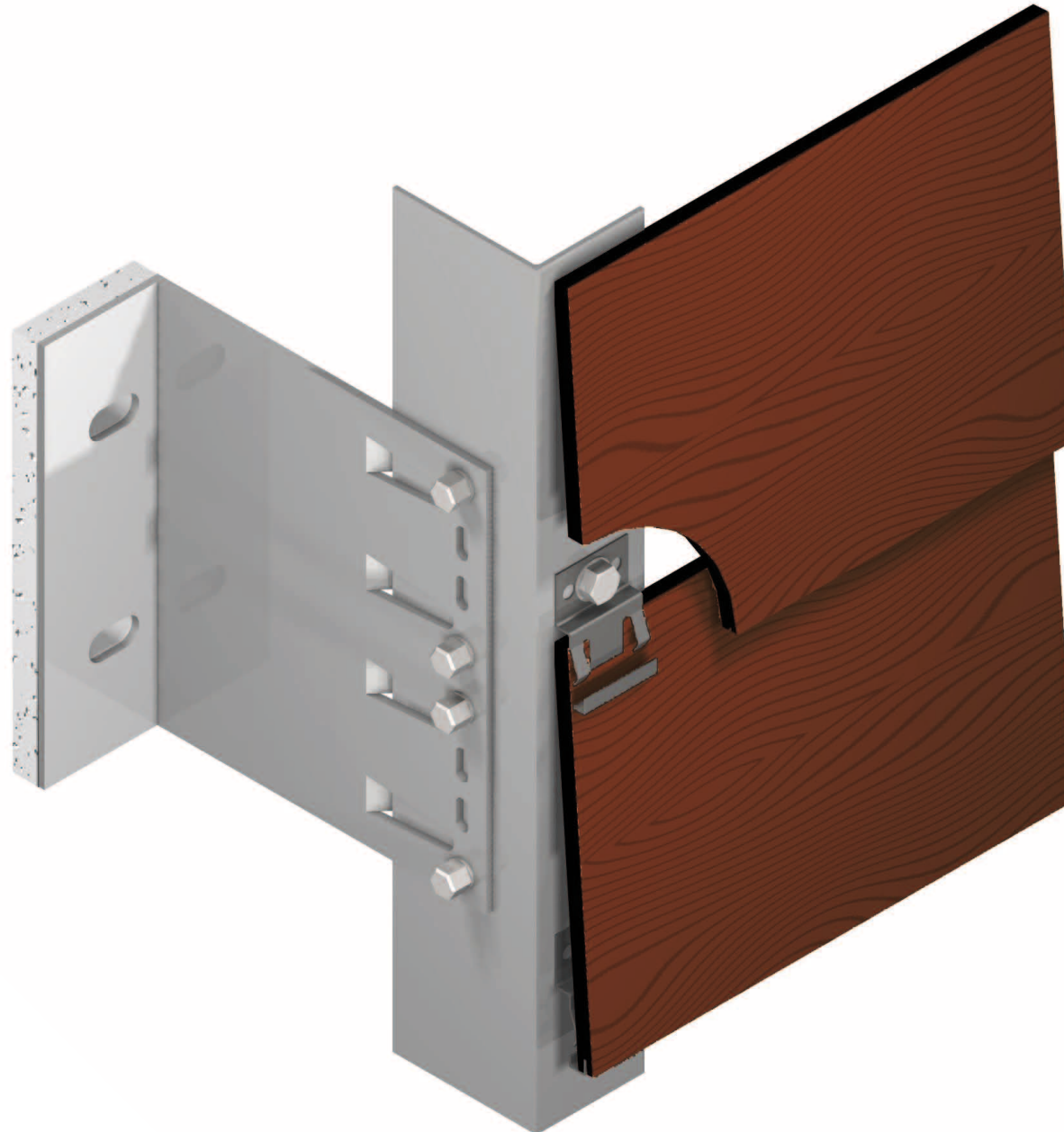


The Wido-Siding system



Wido-Siding

Copyright © Wido-Profil 2013

2013-06-23

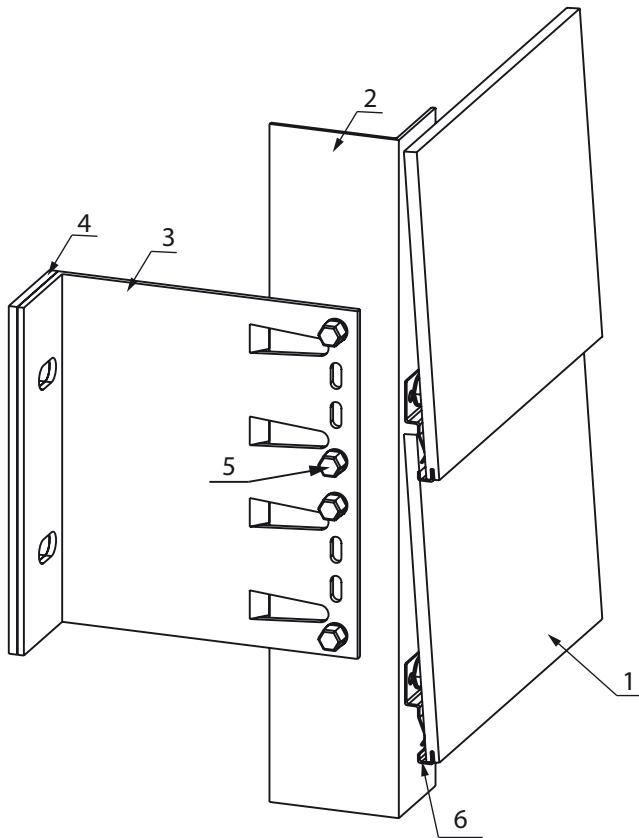
W-S-en

1

The Wido-Siding system



The system is used for assembling panels with the effect of a visible façade structure. Façade panels, such as HPL, are grooved at the bottom edge so that they can be assembled with Wido-Siding stainless steel hanging brackets.



It is strongly advised that the customer, project owner and architect seek independent advice from a certified construction professional and/or engineer regarding application and installation as well as compliance with design requirements, applicable codes, laws and regulations, and test standards. Please check your local codes and applicable design requirements for proper use.

An individual executive design of the ventilated façade is recommended.

Legend:

1. Façade panel
2. Wido-Grip aluminium supporting L-profile
3. Wido-Grip aluminium double bracket
4. Wido-Grip insulation washer
5. Screw or rivet
6. Wido-Siding hanging bracket

The most popular panels used with Wido-Siding are faux wood panels.

Wido-Siding

Copyright © Wido-Profil 2013

2013-06-23

W-S-en

2

Wido-Siding with HPL panels



General recommendations:

1. Ventilation and ventilation area

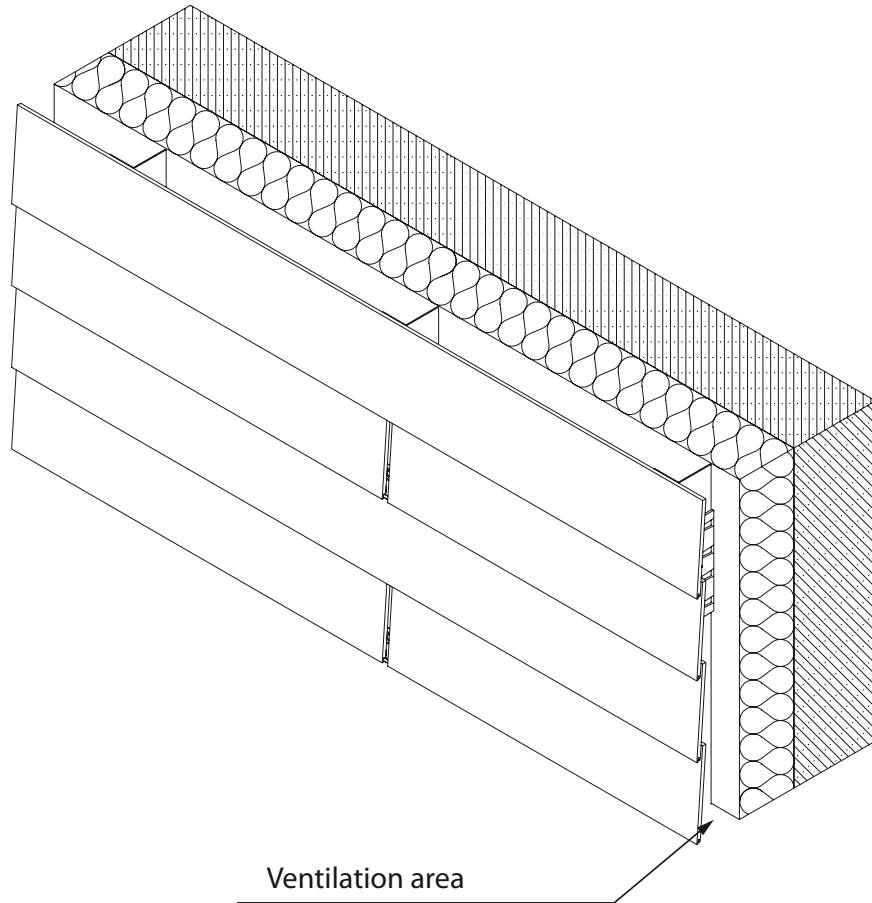
In order to ensure a constant ventilation behind the panels, it is recommended to leave a 20-to-50 mm-wide clearance between the facing and the thermal insulation layer or construction wall, which will allow airflow between ventilation inlets and outlets. The area of ventilation inlets and outlets must amount to at least 50 cm² per every linear metre over the whole façade. The ventilation clearance as well as inlets and outlets should be chosen in accordance with relevant building regulations.

2. The supporting substructure

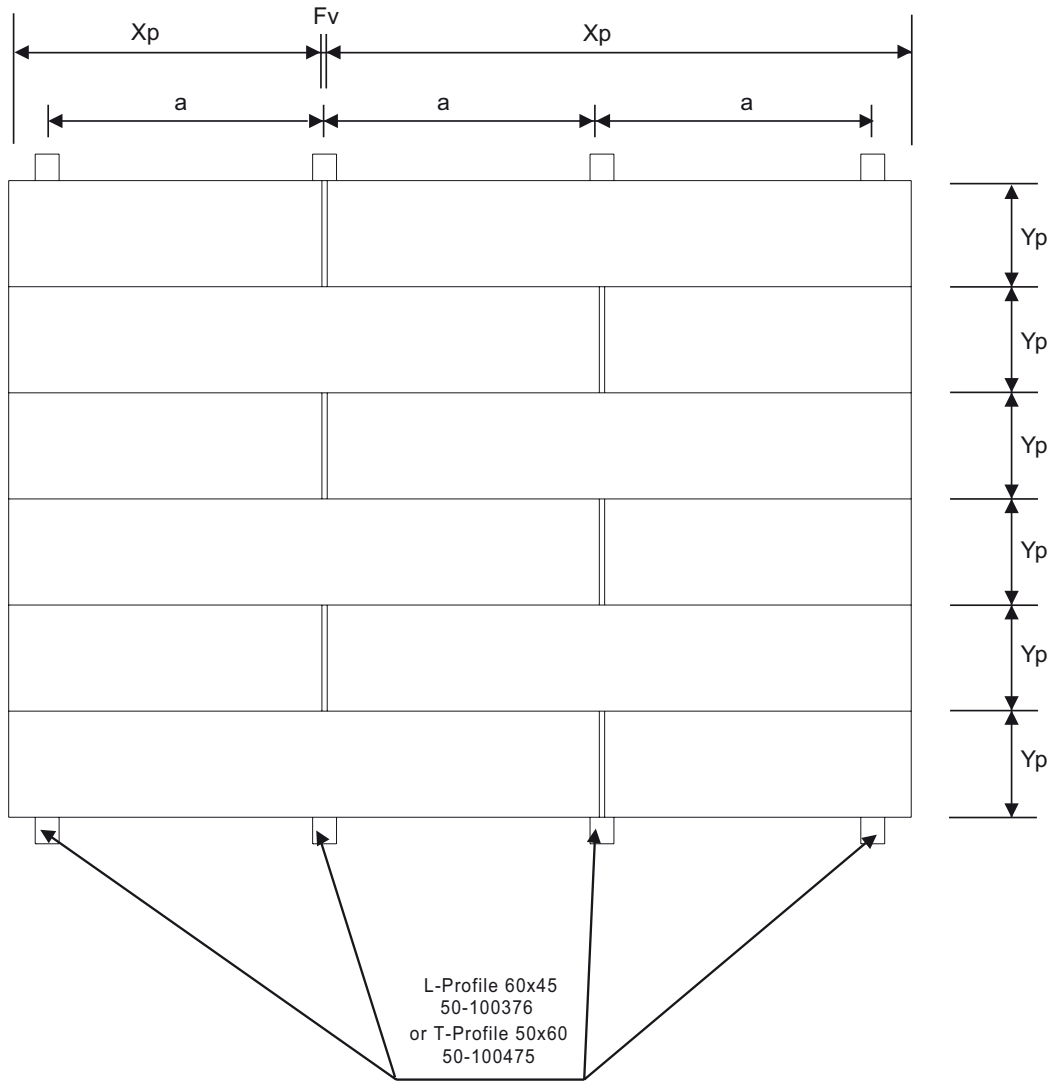
The panels should be installed on a wooden or aluminium supporting substructure of a sufficient strength and constant durability. The quality and conservation of the structure should obey relevant norms and building regulations.

3. Assembly elements

The panels must be assembled upwards. The first line of hanging brackets is installed on 8 mm-thick adjusting blocks. The lap joint width is about 25 mm. To retain a panel position, the panel must have one fixed point by inserting a screw/rivet (minimum 10 mm from the edge) in the middle of the panel length. The top row of panels is fixed to the supporting structure with screws or rivets at the panel top edge.



Maximum Wido-Grip profile spans

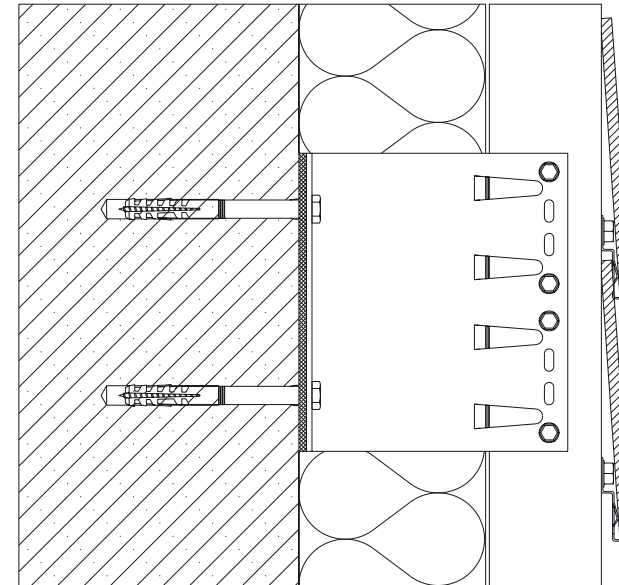
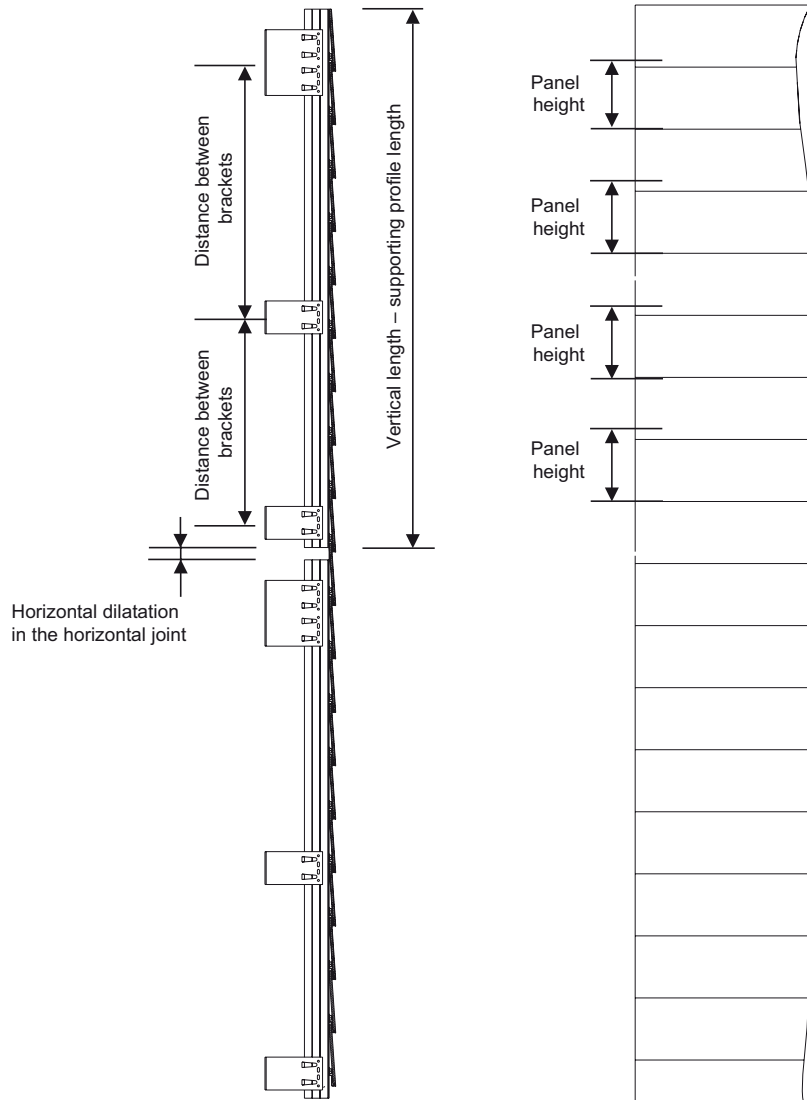


Legend:

- X_p – panel width
- Y_p – panel height
- a – central horizontal position of the panel assemblage line
- b – distance between rivets
- F_v – vertical joint (minimum 10 mm)
- F_h – horizontal joint (minimum 10 mm)

The Wido-Siding system

Determining maximum vertical lengths



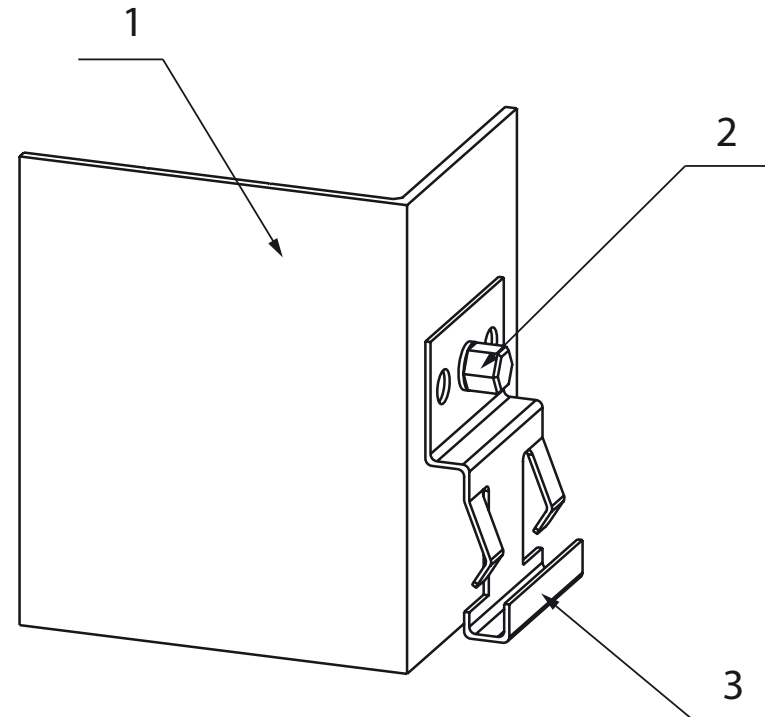
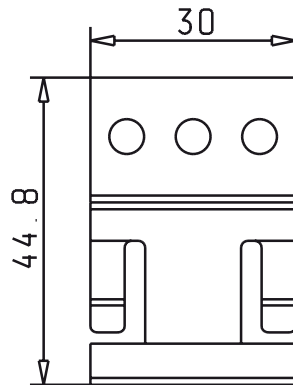
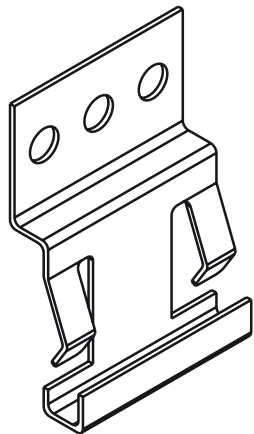
Having determined the panel size, you may proceed with defining the vertical lengths.

Depending on thermal expansion, the profile length may be equal or slightly smaller than the length of one or several panels. Therefore, proper calculations should be made.

Notice: regarding the assemblage, the dilatation of the vertical Wido-Grip profile should be made not in the panel height (behind the panel) but between panels within the horizontal joint.

Assembling the Wido-Siding system

During the assemblage, the Wido-Siding stainless steel plate is fixed to the Wido-Grip structure.



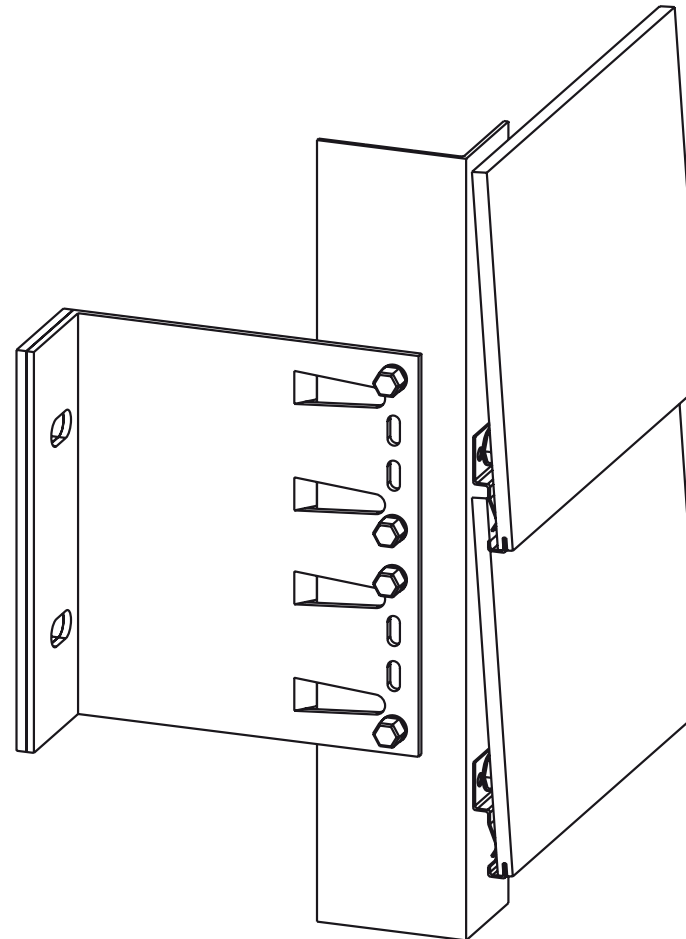
Legend:

- 1. Wido-Grip aluminium supporting L-profile
- 2. Screw
- 3. Wido-Siding hanging bracket

Assembling the Wido-Siding system



The panels are assembled upwards. The panel top edge is riveted or fastened with a stainless steel plate to the substructure. Next, its top edge is covered by another panel, which is supported by a Wido-Siding plate at the bottom.



Wido-Siding

Copyright © Wido-Profil 2013


The Wido-Siding system


An exemplary bracket arrangement

Legend:

a - distance between vertical profiles

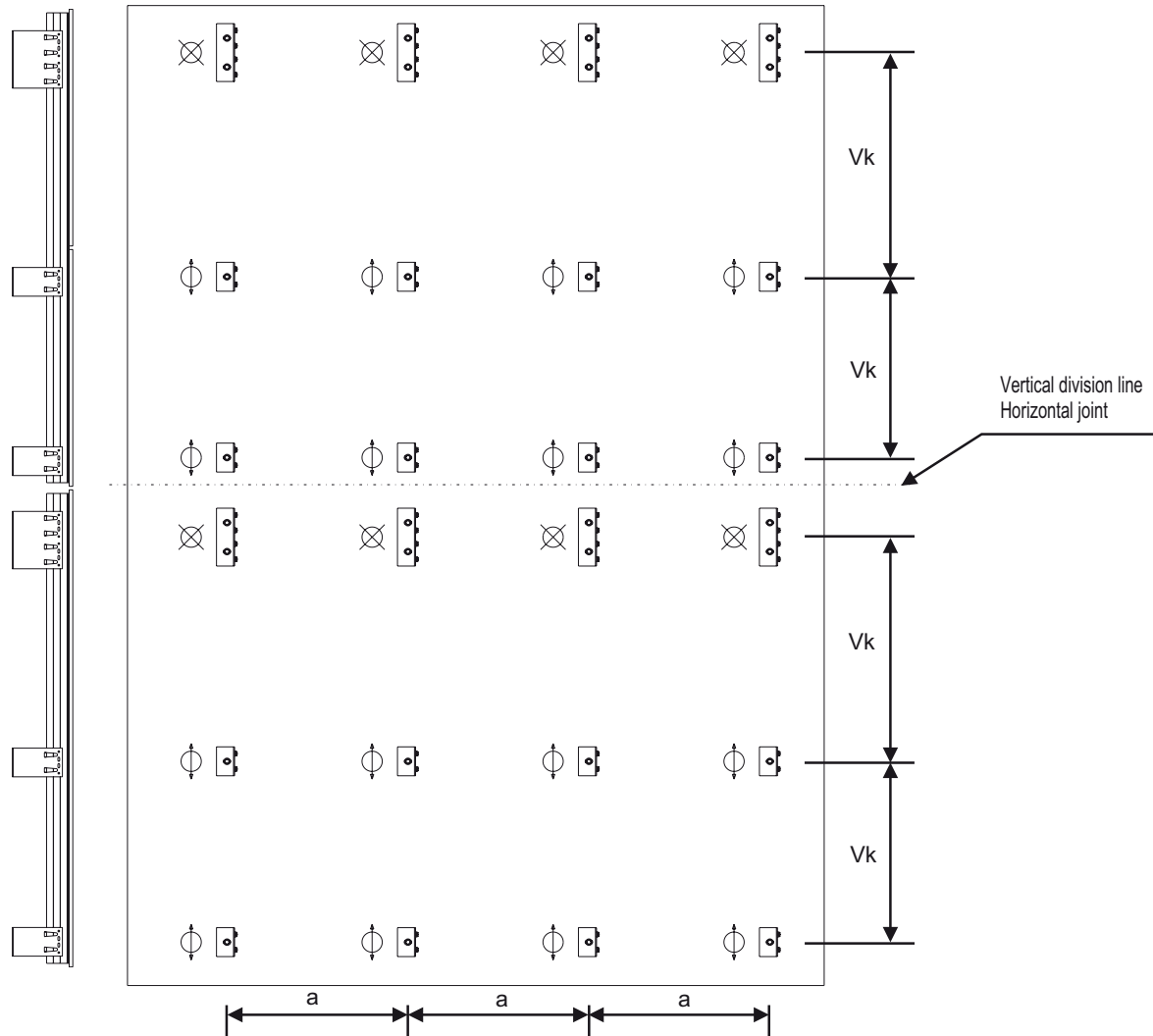
V_k – vertical distances between Wido-Grip bracket axes

 Supporting brackets – fixed points of vertical Wido-Grip profiles

 Retaining brackets – moving points of vertical Wido-Grip profiles

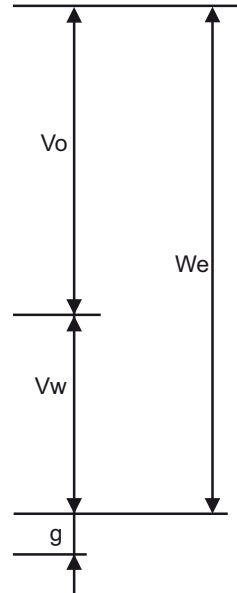
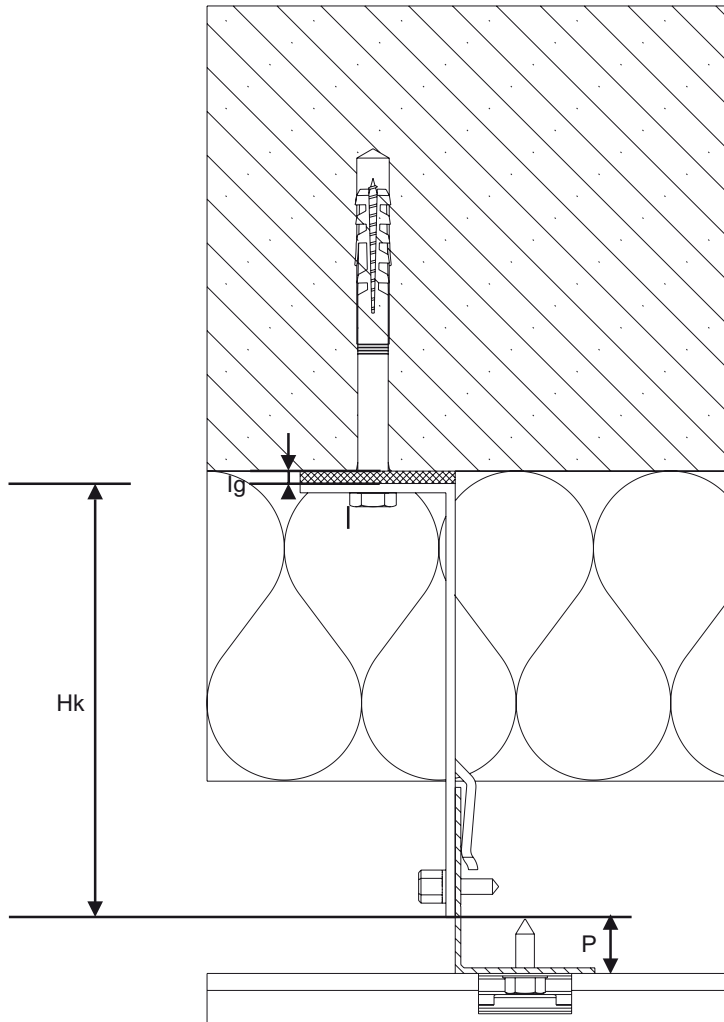
Usually, the supporting bracket is a double bracket.

Lap joints are situated within Wido-Siding profile and bracket axes.



The Wido-Siding system

Calculating bracket height on the basis of elevation outreach



Elevation outreach is the basic factor determining the height of the bracket. While choosing the bracket, you should consider the unevenness of the surface. The vertical adjustment of Wido-Grip profiles should be made possible.

$$Hk = We - (g+P+lg)$$

Legend:

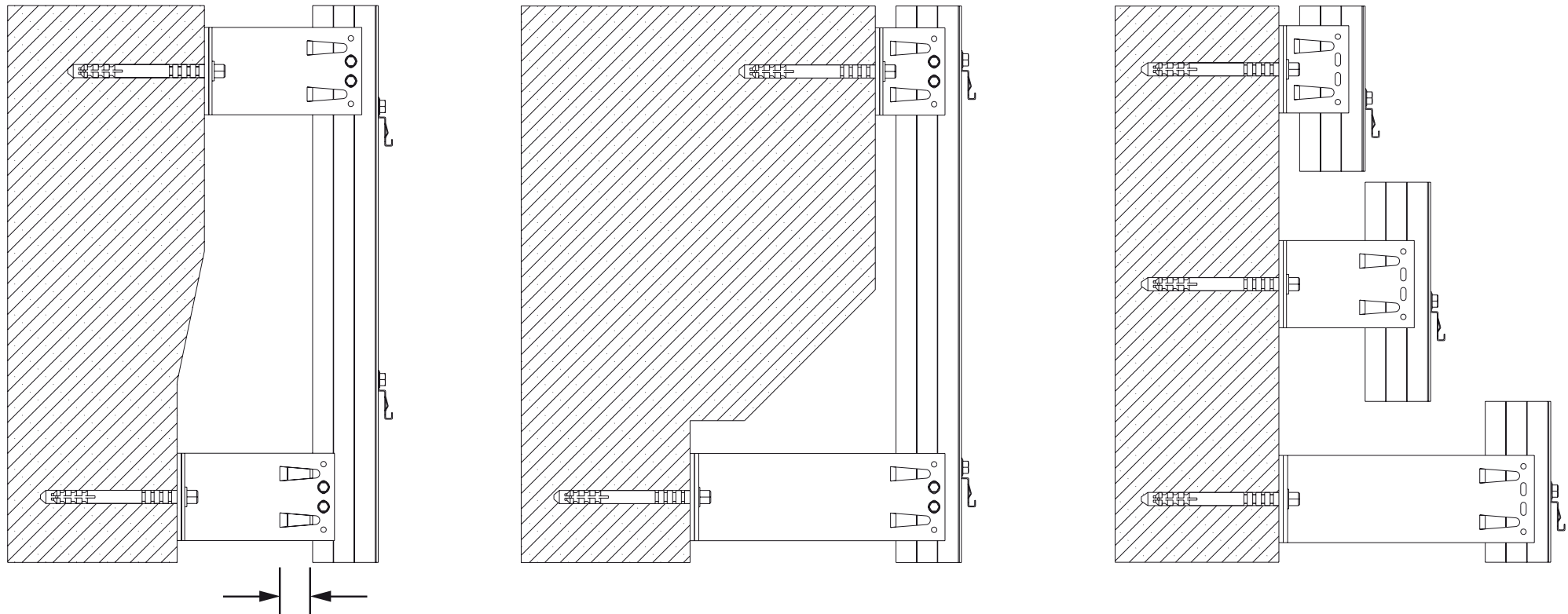
- Legend:
- We – elevation outreach
 - Vo – thermal insulation thickness
 - Vw – ventilation clearance (minimum 20 mm)
 - g – panel thickness
 - P – substructure height between the bracket and the panel
 - lg – Wido-Grip insulation washer thickness
 - Hk – Wido-Grip bracket height

The Wido-Siding system

Levelling the unevenness of building surface



Adjusting façade outreach through the change of a bracket size



Adjusting a single bracket

When the adjustment of a single bracket is insufficient, you can exchange the bracket for a smaller or bigger one. Wido-Grip aluminium brackets are produced in the following sizes: 60, 80, 100, 120, 140, 160, 180, 200 and 230 mm.

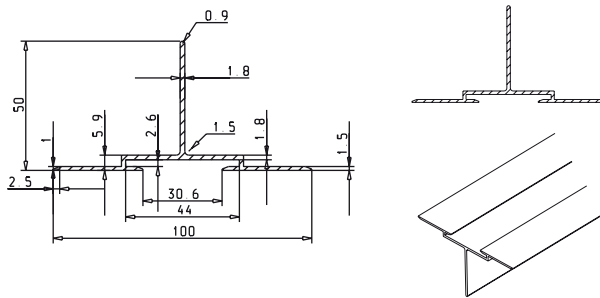
For greater outreaches, stainless steel brackets or bracket lengthening devices should be used.

Wido-Grip elements Aluminium profiles



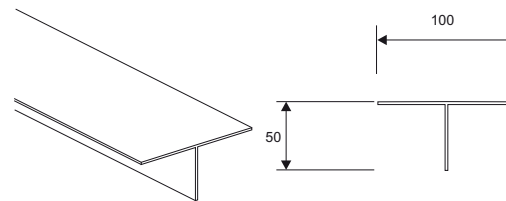
00-100228

T-profil fasadowy 100x50 - aluminium
Aluminium T-profile for façades 100x50 mm
T-Profilstück für Fassaden 100x50 - aluminium



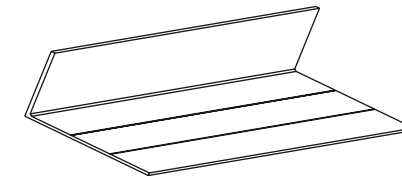
50-100346

T-profil 100x50x2 - aluminium
Aluminium T-profile 100x50x2 mm
T-Profilstück 100x50x2 – aluminium



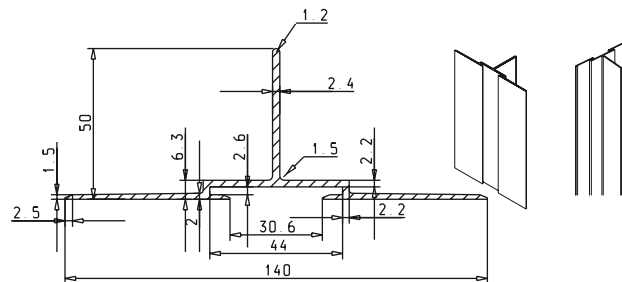
50-100376

L-profil 60*45 mm - aluminium
Aluminium L-profile 60*45 mm
L-Profilstück 60*45 mm – aluminium



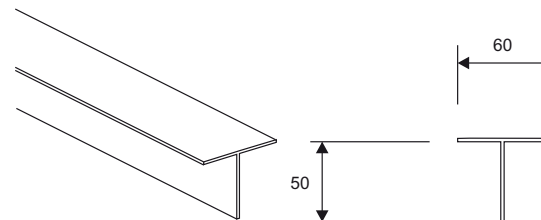
00-100263

T-profil fasadowy 140x50 - aluminium
Aluminium T-profile for façades 140x50 mm
T-Profilstück für Fassaden 140x50 – aluminium



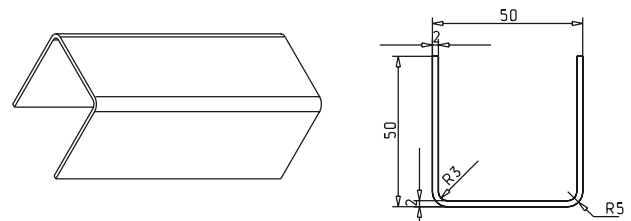
50-100475

T-profil 60x50x2 – aluminium
Aluminium T-profile 60x50x2
T-Profilstück 60x50x2 – aluminium



01-100504

C-profil 50x50x2 – aluminium
Aluminium C-profile 50x50x2
C-Profilstück 50x50x2 – aluminium

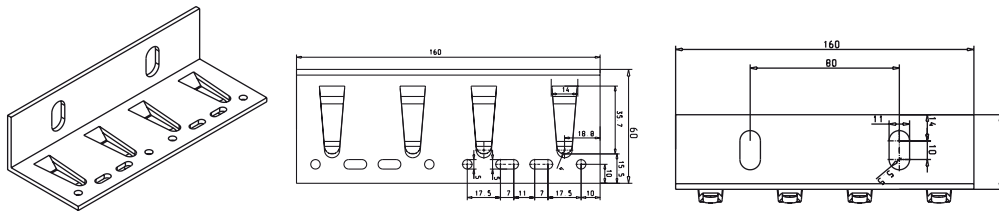


Wido-Grip elements Aluminium brackets 60



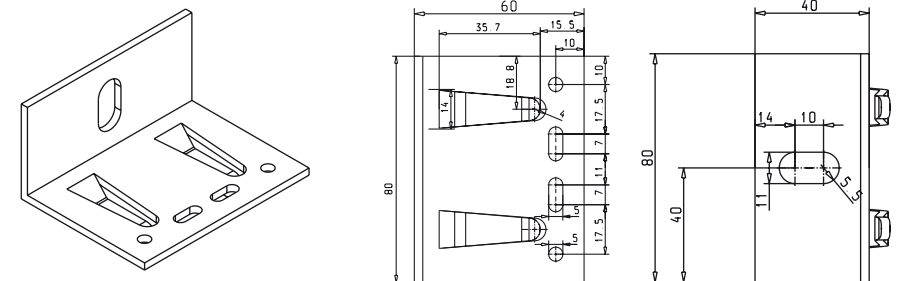
52-100351

Podwójna konsola 160-60x40x3 Ø 11 - aluminium
Aluminium double bracket 160-60x40x3 Ø 11
Tragkonstruktion doppelt 160-60x40x3 Ø 11 – aluminium



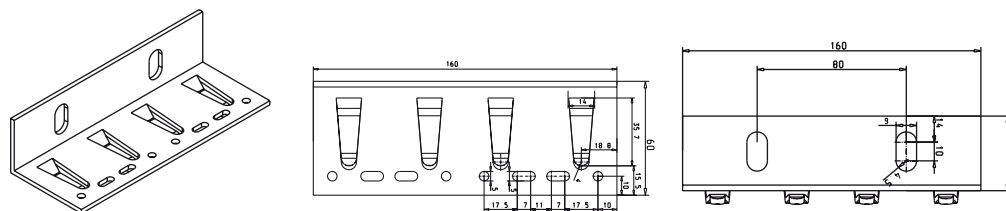
51-100347

Konsola 80-60x40x3 Ø 11 - aluminium
Aluminium bracket 80-60x40x3 Ø 11
Tragkonstruktion 80-60x40x3 Ø 11 – aluminium



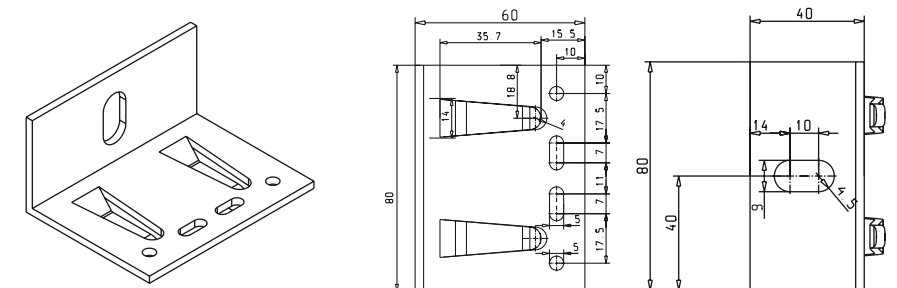
52-100352

Podwójna konsola 160-60x40x3 Ø 9 - aluminium
Aluminium double bracket 160-60x40x3 Ø 9
Tragkonstruktion doppelt 160-60x40x3 Ø 9 – aluminium



51-100348

Konsola 80-60x40x3 Ø 9 - aluminium
Aluminium bracket 80-60x40x3 Ø 9
Tragkonstruktion 80-60x40x3 Ø 9 – aluminium

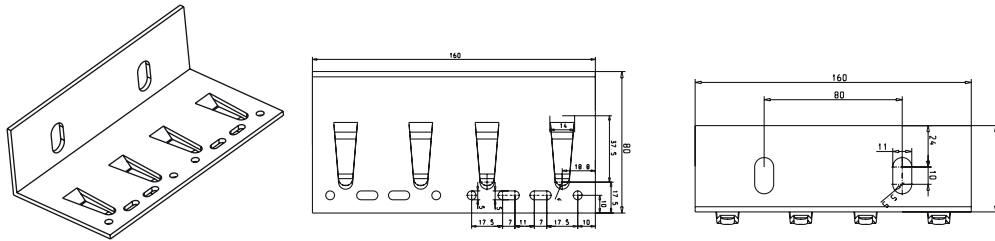


Wido-Grip elements Aluminium brackets 80



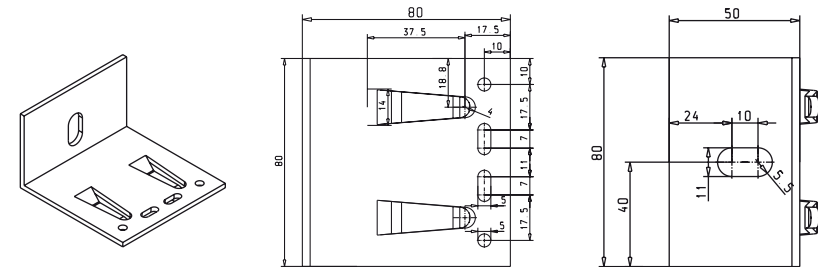
52-100356

Podwójna konsola 160-80x50x3 Ø 11 - aluminium
Aluminium double bracket 160-80x50x3 Ø 11
Tragkonstruktion doppelt 160-80x50x3 Ø 11 – aluminium



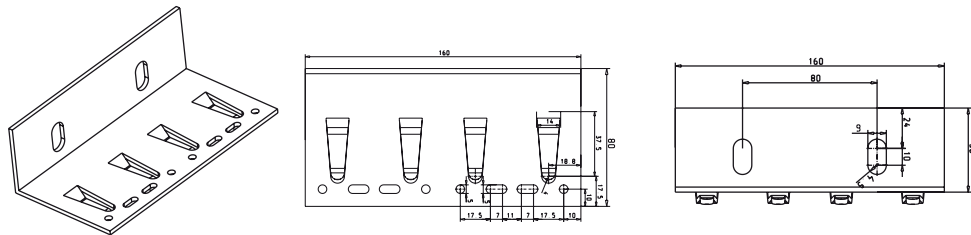
51-100353

Konsola 80-80x50x3 Ø 11- aluminium
Aluminium bracket 80-80x50x3 Ø 11
Tragkonstruktion 80-80x50x3 Ø 11 – aluminium



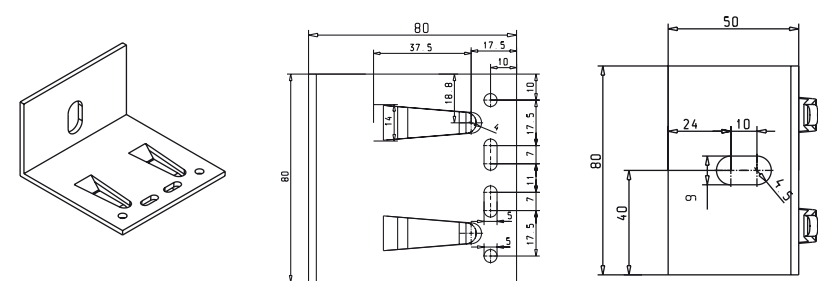
52-100357

Podwójna konsola 160-80x50x3 Ø 9 - aluminium
Aluminium double bracket 160-80x50x3 Ø 9
Tragkonstruktion doppelt 160-80x50x3 Ø 9 – aluminium



51-100354

Konsola 80-80x50x3 Ø 9 - aluminium
Aluminium bracket 80-80x50x3 Ø 9
Tragkonstruktion 80-80x50x3 Ø 9 – aluminium

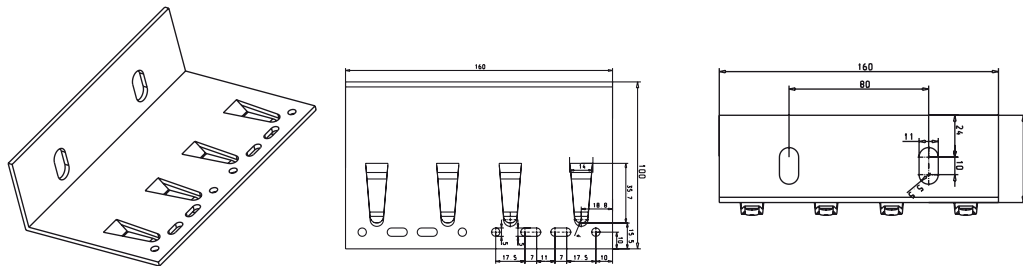


Wido-Grip elements Aluminium brackets 100



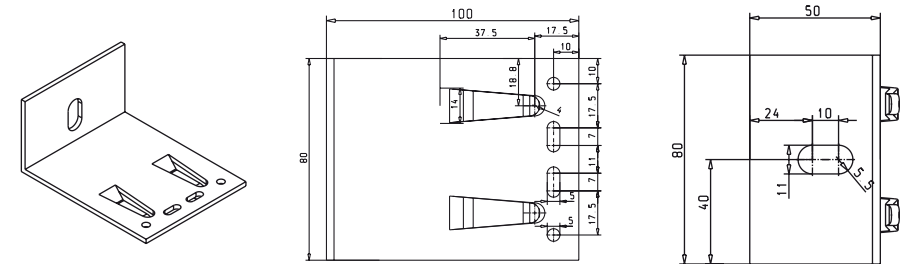
52-100360

Podwójna konsola 160-100x50x3 Ø 11 - aluminium
Aluminium double bracket 160-100x50x3 Ø 11
Tragkonstruktion doppelt 160-100x50x3 Ø 11 – aluminium



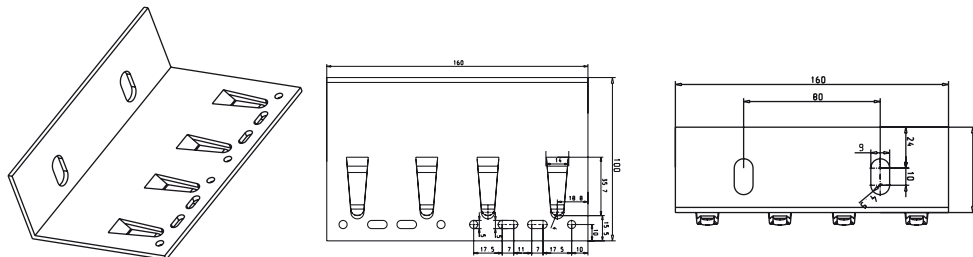
51-100358

Konsola 80-100x50x3 Ø 11 - aluminium
Aluminium bracket 80-100x50x3 Ø 11
Tragkonstruktion 80-100x50x3 Ø 11 – aluminium



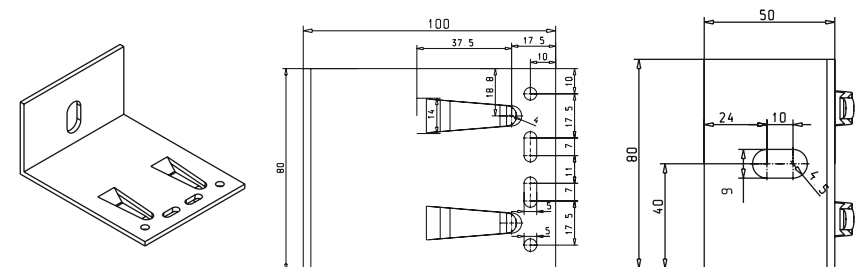
52-100361

Podwójna konsola 160-100x50x3 Ø 9 - aluminium
Aluminium double bracket 160-100x50x3 Ø 9
Tragkonstruktion doppelt 160-100x50x3 Ø 9 – aluminium



51-100359

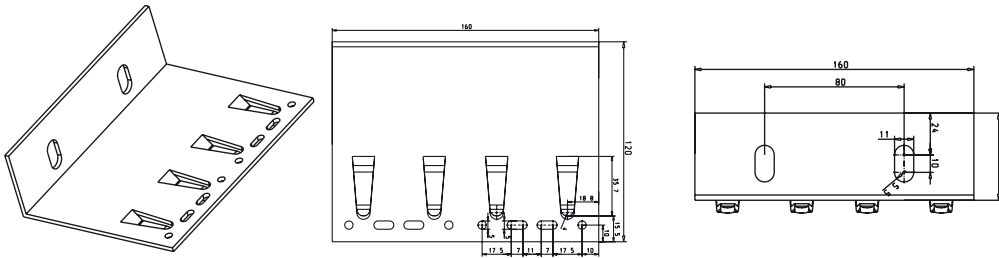
Konsola 80-100x50x3 Ø 9 - aluminium
Aluminium bracket 80-100x50x3 Ø 9
Tragkonstruktion 80-100x50x3 Ø 9 – aluminium



Wido-Grip elements Aluminium brackets 120

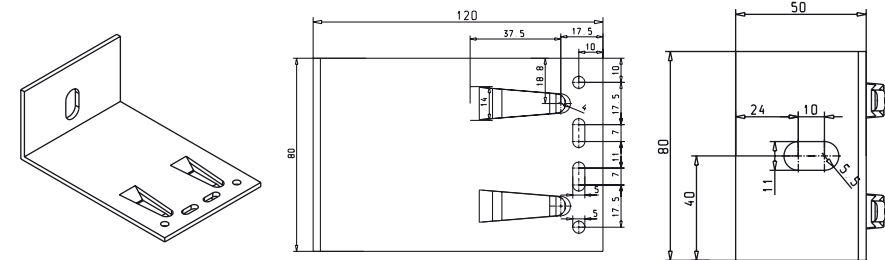
52-100364

Podwójna konsola 160-120x50x3 Ø 11 - aluminium
Aluminium double bracket 160-120x50x3 Ø 11
Tragkonstruktion doppelt 160-120x50x3 Ø 11 – aluminium



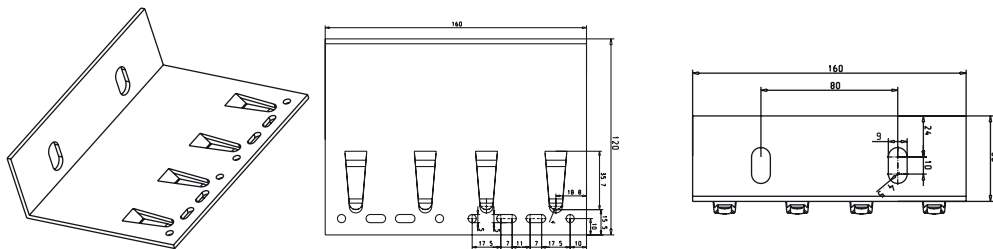
51-100362

Konsola 80-120x50x3 Ø 11- aluminium
Aluminium bracket 80-120x50x3 Ø 11
Tragkonstruktion 80-120x50x3 Ø 11 – aluminium



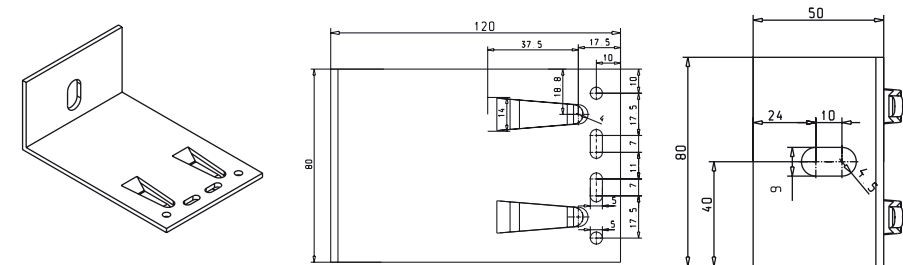
52-100365

Podwójna konsola 160-120x50x3 Ø 9 - aluminium
Aluminium double bracket 160-120x50x3 Ø 9
Tragkonstruktion doppelt 160-120x50x3 Ø 9 – aluminium



51-100363

Konsola 80-120x50x3 Ø 9 - aluminium
Aluminium bracket 80-120x50x3 Ø 9
Tragkonstruktion 80-120x50x3 Ø 9 – aluminium

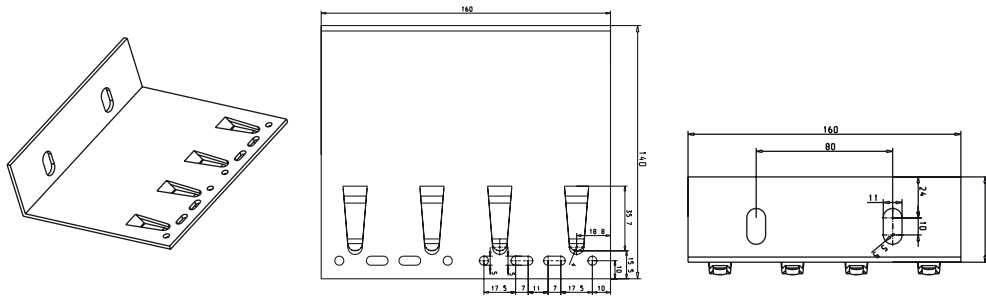


Wido-Grip elements Aluminium brackets 140



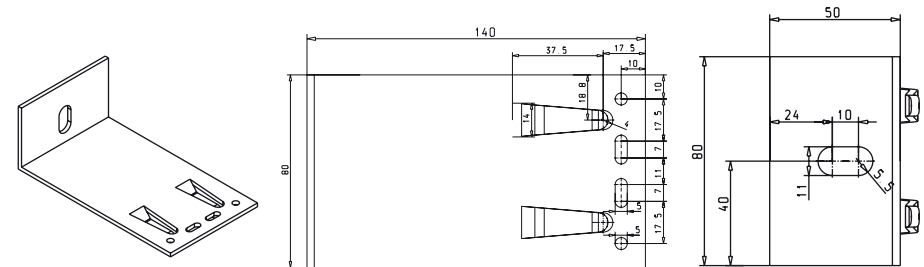
52-100368

Podwójna konsola 160-140x50x3 Ø 11 - aluminium
Aluminium double bracket 160-140x50x3 Ø 11
Tragkonstruktion doppelt 160-140x50x3 Ø 11 – aluminium



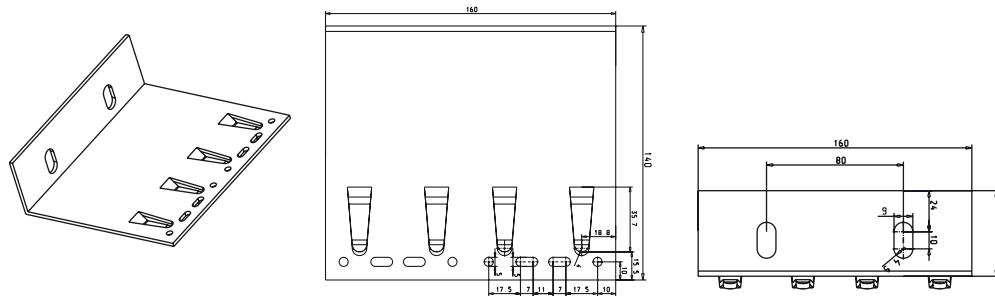
51-100366

Konsola 80-140x50x3 Ø 11 - aluminium
Aluminium bracket 80-140x50x3 Ø 11
Tragkonstruktion 80-140x50x3 Ø 11 – aluminium



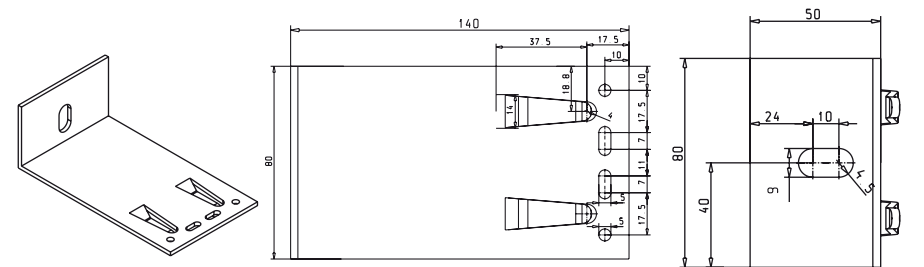
52-100369

Podwójna konsola 160-140x50x3 Ø 9 - aluminium
Aluminium double bracket 160-140x50x3 Ø 9
Tragkonstruktion doppelt 160-140x50x3 Ø 9 – aluminium



51-100367

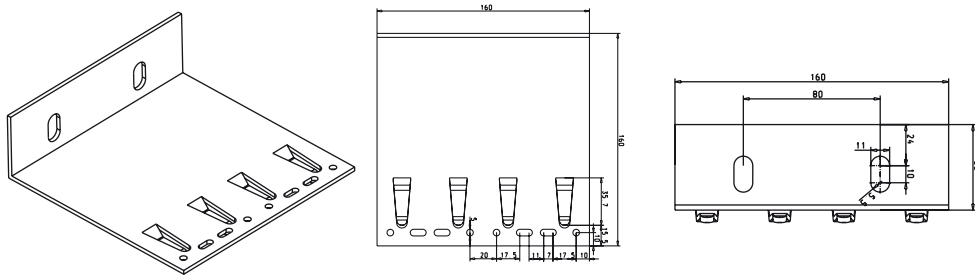
Konsola 80-140x50x3 Ø 9 - aluminium
Aluminium bracket 80-140x50x3 Ø 9
Tragkonstruktion 80-140x50x3 Ø 9 – aluminium



Wido-Grip elements Aluminium brackets 160

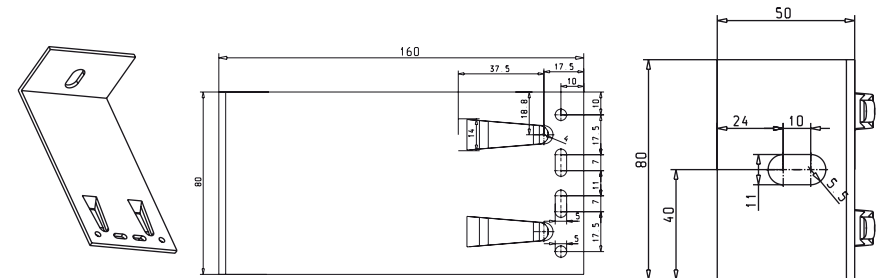
52-100372

Podwójna konsola 160-160x50x3 Ø 11 - aluminium
Aluminium double bracket 160-160x50x3 Ø 11
Tragkonstruktion doppelt 160-160x50x3 Ø 11 – aluminium



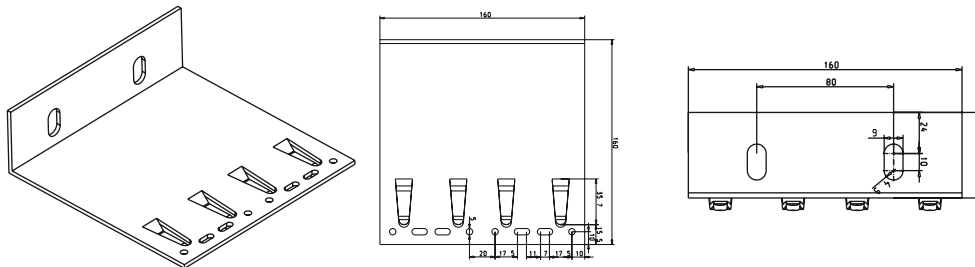
51-100370

Konsola 80-160x50x3 Ø 11 - aluminium
Aluminium bracket 80-160x50x3 Ø 11
Tragkonstruktion 80-160x50x3 Ø 11 – aluminium



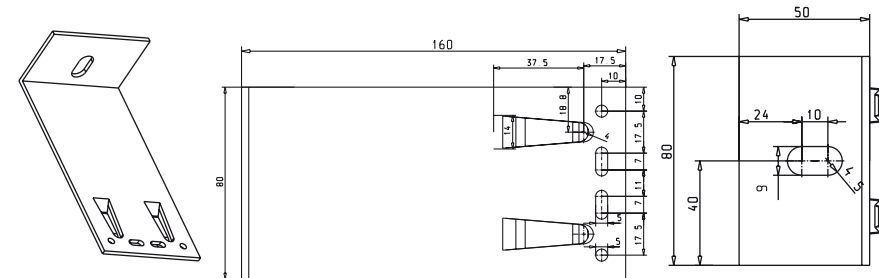
52-100373

Podwójna konsola 160-160x50x3 Ø 9 - aluminium
Aluminium double bracket 160-160x50x3 Ø 9
Tragkonstruktion 160-160x50x3 Ø 9 – aluminium



51-100371

Konsola 80-160x50x3 Ø 9 - aluminium
Aluminium bracket 80-160x50x3 Ø 9
Tragkonstruktion 80-160x50x3 Ø 9 – aluminium

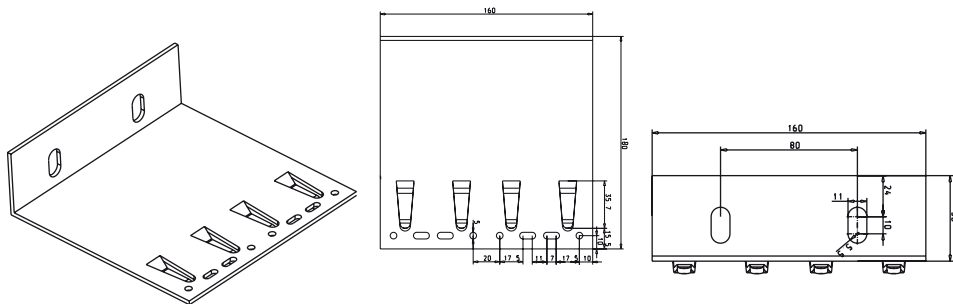


Wido-Grip elements Aluminium brackets 180



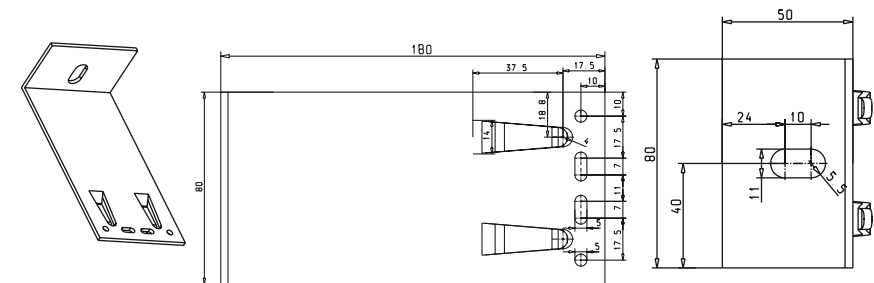
52-100433

Podwójna konsola aluminiowa 160-180x50x3 Ø 11
Aluminium double bracket 160-180x50x3 Ø 11
Tragkonstruktion doppelt 160-180x50x3 Ø 11 – aluminium



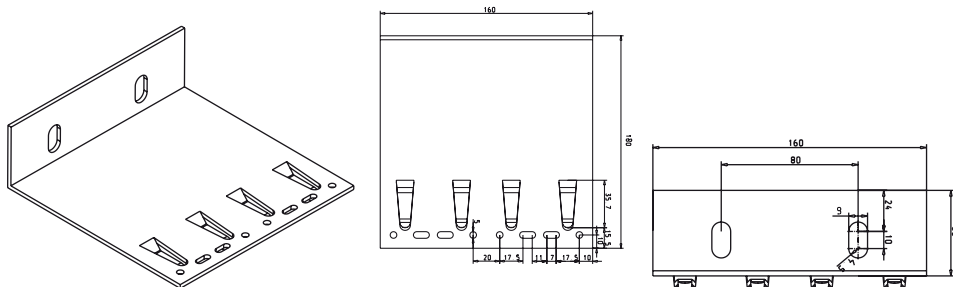
51-100431

Konsola aluminiowa 80-180x50x3 Ø 11
Aluminium bracket 80-180x50x3 Ø 11
Tragkonstruktion 80-180x50x3 Ø 11 – aluminium



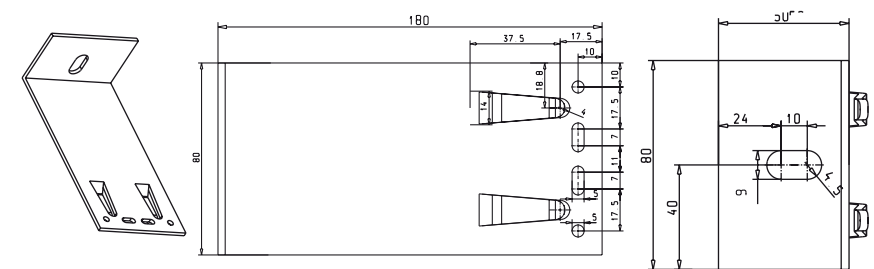
52-100434

Podwójna konsola aluminiowa 160-180x50x3 Ø 9
Aluminium double bracket 160-180x50x3 Ø 9
Tragkonstruktion doppelt 160-180x50x3 Ø 9 – aluminium



51-100432

Konsola aluminiowa 80-180x50x3 Ø 9
Aluminium bracket 80-180x50x3 Ø 9
Tragkonstruktion 80-180x50x3 Ø 9 – aluminium

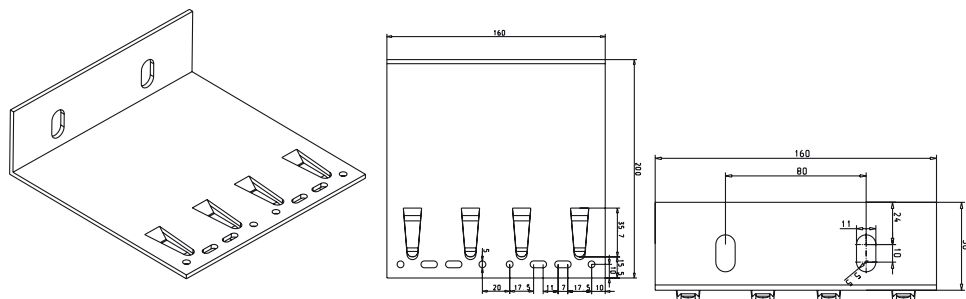


Wido-Grip elements Aluminium brackets 200



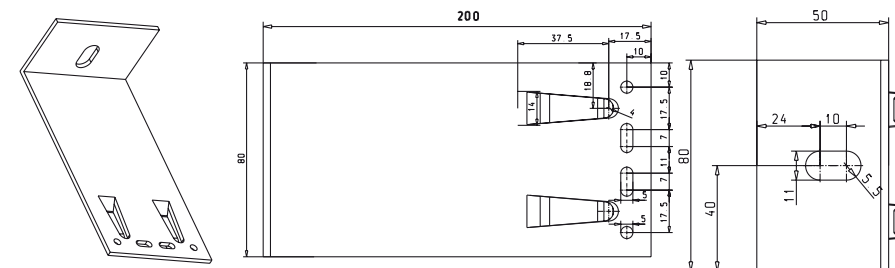
52-100384

Podwójna konsola aluminiowa 160-200x50x3 Ø 11
Aluminium double bracket 160-200x50x3 Ø 11
Tragkonstruktion doppelt 160-200x50x3 Ø 11 – aluminium



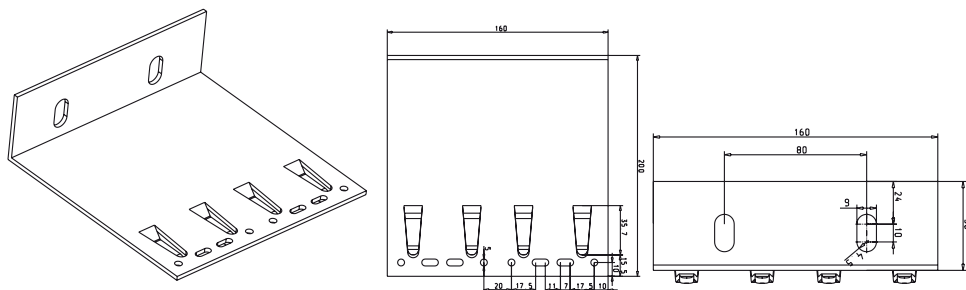
51-100382

Konsola aluminiowa 80-200x50x3 Ø 11
Aluminium bracket 80-200x50x3 Ø 11
Tragkonstruktion 80-200x50x3 Ø 11 – aluminium



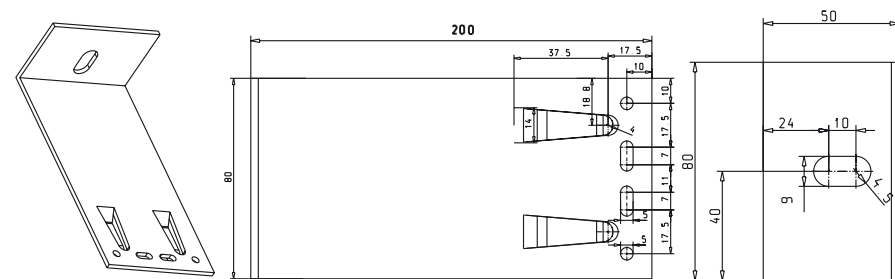
52-100385

Podwójna konsola aluminiowa 160-200x50x3 Ø 9
Aluminium double bracket 160-200x50x3 Ø 9
Tragkonstruktion doppelt 160-200x50x3 Ø 9 – aluminium



51-100383

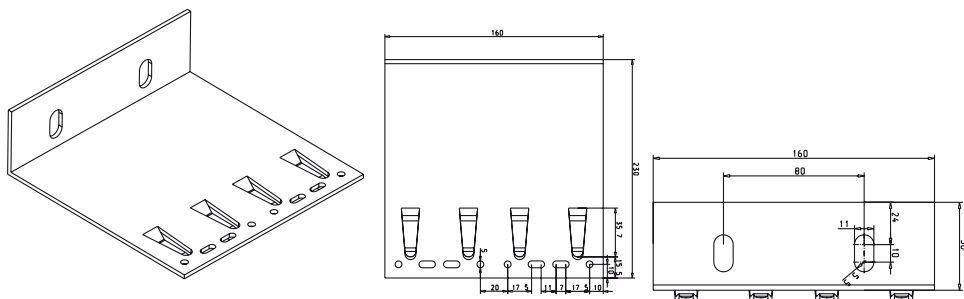
Konsola aluminiowa 80-200x50x3 Ø 9
Aluminium bracket 80-200x50x3 Ø 9
Tragkonstruktion 80-200x50x3 Ø 9 – aluminium



Wido-Grip elements Aluminium brackets 230

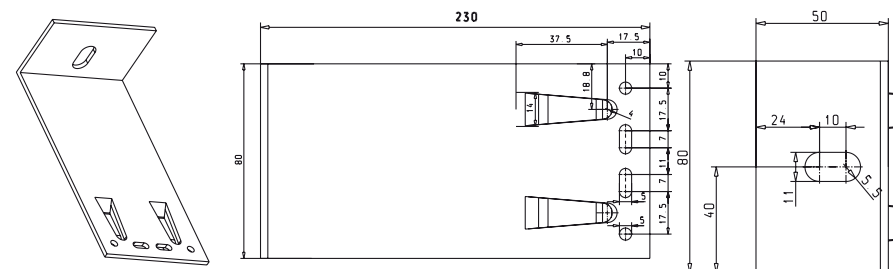
52-100443

Podwójna konsola aluminiowa 160-230x50x3 Ø 11
Aluminium double bracket 160-230x50x3 Ø 11
Tragkonstruktion doppelt 160-230x50x3 Ø 11 – aluminium



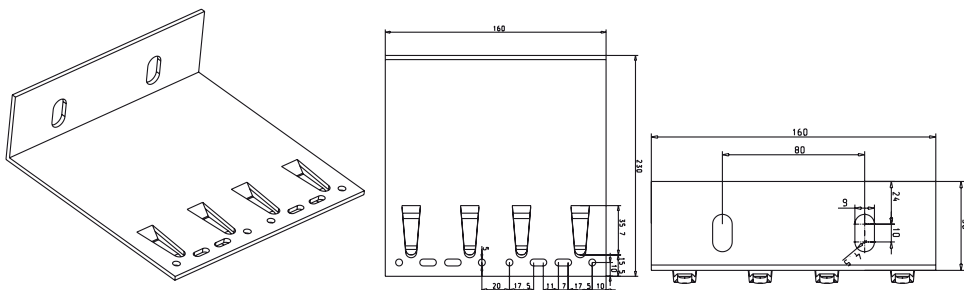
51-100441

Konsola aluminiowa 80-230x50x3 Ø 11
Aluminum bracket 80-230x50x3 Ø 11
Tragkonstruktion 80-230x50x3 Ø 11 – aluminium



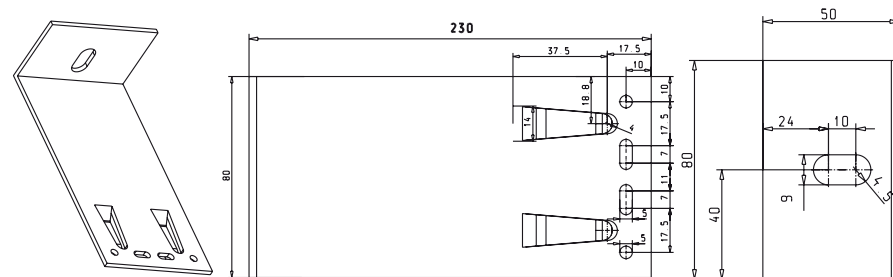
52-100444

Podwójna konsola aluminiowa 160-230x50x3 Ø 9
Aluminium double bracket 160-230x50x3 Ø 9
Tragkonstruktion doppelt 160-230x50x3 Ø 9 – aluminium



51-100442

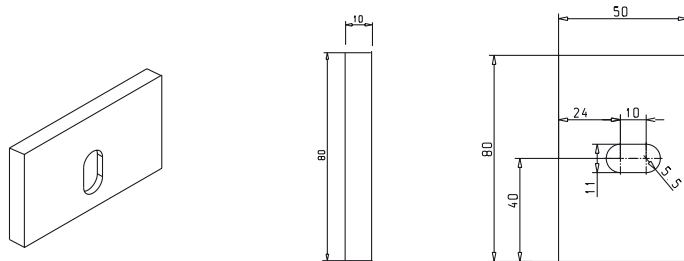
Konsola aluminiowa 80-230x50x3 Ø 9
Aluminium bracket 80-230x50x3 Ø 9
Tragkonstruktion 80-230x50x3 Ø 9 – aluminium



Wido-Grip elements Aluminium brackets

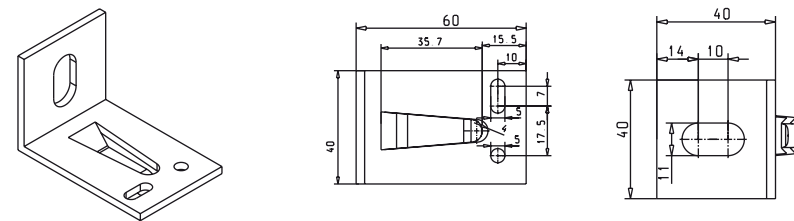
54-500355

Podkładka izolacyjna konsoli 80/50 – PCV
P.C.V. insulation washer for brackets 80/50
Unterlagsplatte für Tragkonstruktion 80/50



53-100349

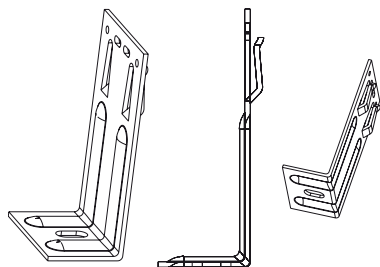
Konsola 40-60x40x3 Ø 11 – aluminium
Aluminium bracket 40-60x40x3 Ø 11
Tragkonstruktion 40-60x40x3 Ø 11 – aluminium



Stainless steel brackets

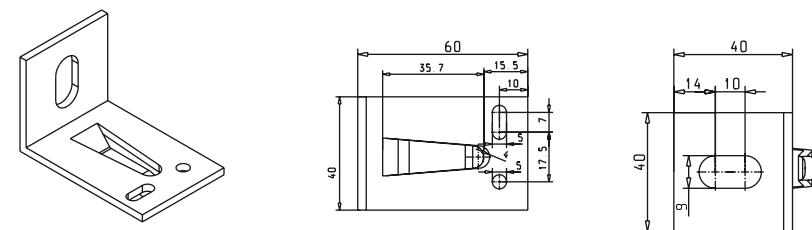
Wido-Profil also offers stainless steel brackets:
a single bracket – 80 mm and
a double bracket – 160 mm.

The length of brackets is determined by technical requirements of the design.



53-100350

Konsola 40-60x40x3 Ø 9 – aluminium
Aluminium bracket 40-60x40x3 Ø 9
Tragkonstruktion 40-60x40x3 Ø 9 – aluminium



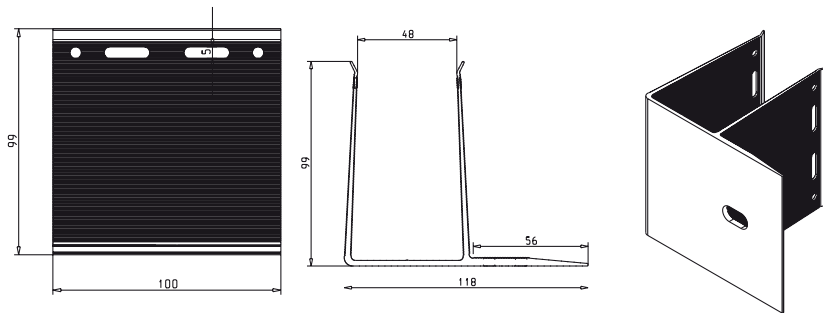
Wido-Grip elements

Aluminium F-type brackets; Y-type fasteners



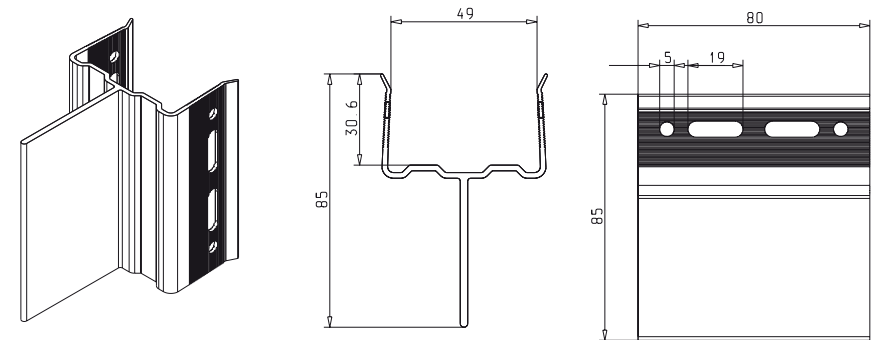
51-100497

Konsola „F” 100-100x118 Ø 11 – aluminium
 Aluminium F-bracket 100-100x118 Ø 11
 „F” Tragkonstruktion 100-100x118 Ø 11 – aluminium



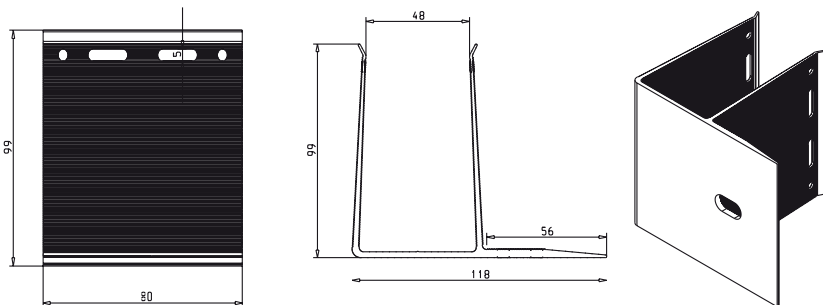
51-100520

Y-type fastener for a wooden structure or Ω-profiles 80 mm



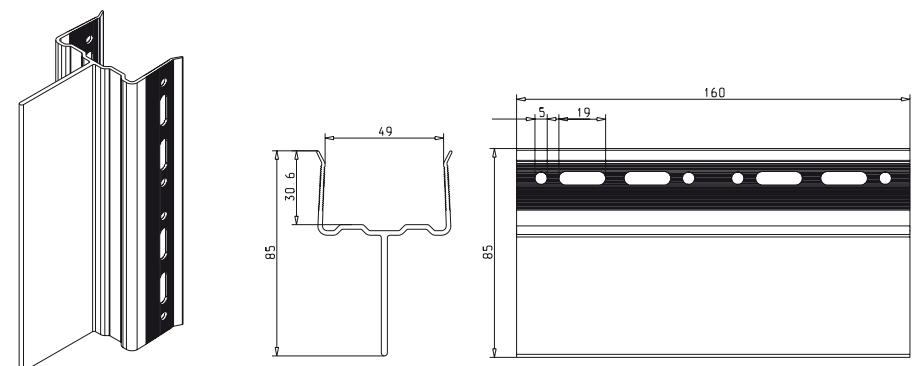
51-100505

Konsola „F” 80-100x118 Ø 11 – aluminium
 Aluminium F-bracket 80-100x118 Ø 11
 „F” Tragkonstruktion 80-100x118 Ø 11 – aluminium

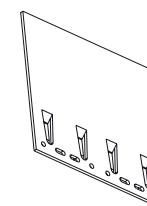


51-100521

Y-type fastener for a wooden structure or Ω-profiles 160 mm



Wido-Grip elements - flat brackets



56-100386

Konsola aluminiowa płaska pojedyncza 80x150 #4mm
Aluminium single flat bracket 80x150 #4mm
Tragkonstruktion flach/einfach 80x150 #4mm – aluminium

57-100387

Konsola aluminiowa płaska podwójna 160x150 #4mm
Aluminium double flat bracket 160x150 #4mm
Tragkonstruktion flach/doppelt 160x150 #4mm – aluminium

56-100388

Konsola aluminiowa płaska pojedyncza 80x200 #4mm
Aluminium single flat bracket 80x200 #4mm
Tragkonstruktion flach/einfach 80x200 #4mm – aluminium

57-100389

Konsola aluminiowa płaska podwójna 160x200 #4mm
Aluminium double flat bracket 160x200 #4mm
Tragkonstruktion flach/doppelt 160x200 #4mm – aluminium

56-100390

Konsola aluminiowa płaska pojedyncza 80x250 #4mm
Aluminium single flat bracket 80x250 #4mm
Tragkonstruktion flach/einfach 80x250 #4mm – aluminium

57-100391

Konsola aluminiowa płaska podwójna 160x250 #4mm
Aluminium double flat bracket 160x250 #4mm
Tragkonstruktion flach/doppelt 160x250 #4mm – aluminium

56-100392

Konsola aluminiowa płaska pojedyncza 80x300 #4mm
Aluminium single flat bracket 80x300 #4mm
Tragkonstruktion flach/einfach 80x300 #4mm – aluminium

57-100393

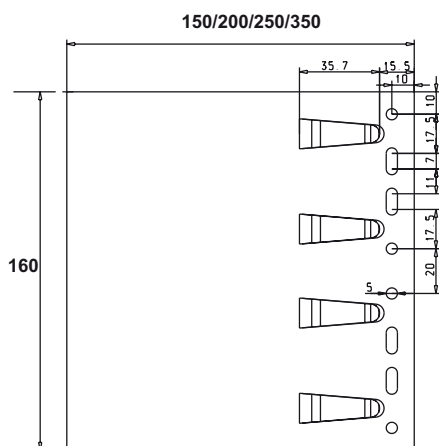
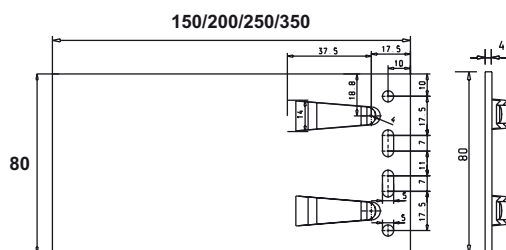
Konsola aluminiowa płaska podwójna 160x300 #4mm
Aluminium double flat bracket 160x300 #4mm
Tragkonstruktion flach/doppelt 160x300 #4mm – aluminium

56-100394

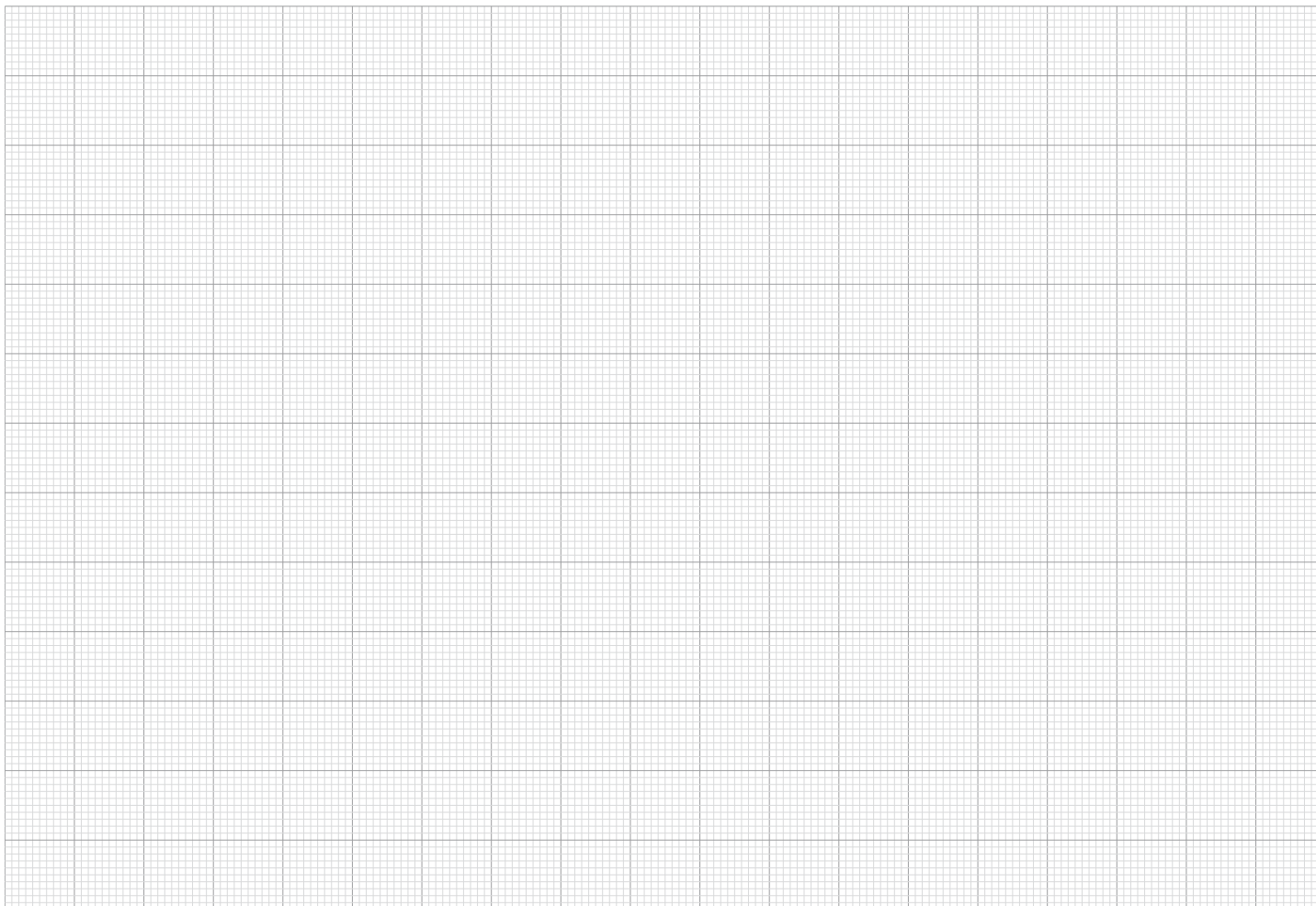
Konsola aluminiowa płaska pojedyncza 80x350 #4mm
Aluminium single flat bracket 80x350 #4mm
Tragkonstruktion flach/einfach 80x350 #4mm – aluminium

57-100395

Konsola aluminiowa płaska podwójna 160x350 #4mm
Aluminium double flat bracket 160x350 #4mm
Tragkonstruktion flach/doppelt 160x350 #4mm – aluminium



Notes:



Wido-Profil

Wido Profil Ltd.

22A Wielicka St.

Cracow 30-552, Poland

Telephone: 12 274 17 15

Fax: 12 274 40 81

E-mail: biuro@wido.com.pl

www.wido.com.pl

Copyright © Wido-Profil 2013

VENTILATED FAÇADES – ALUMINIUM JOINERY – RAILING SYSTEMS – ROOFING – SANITARY CABINS